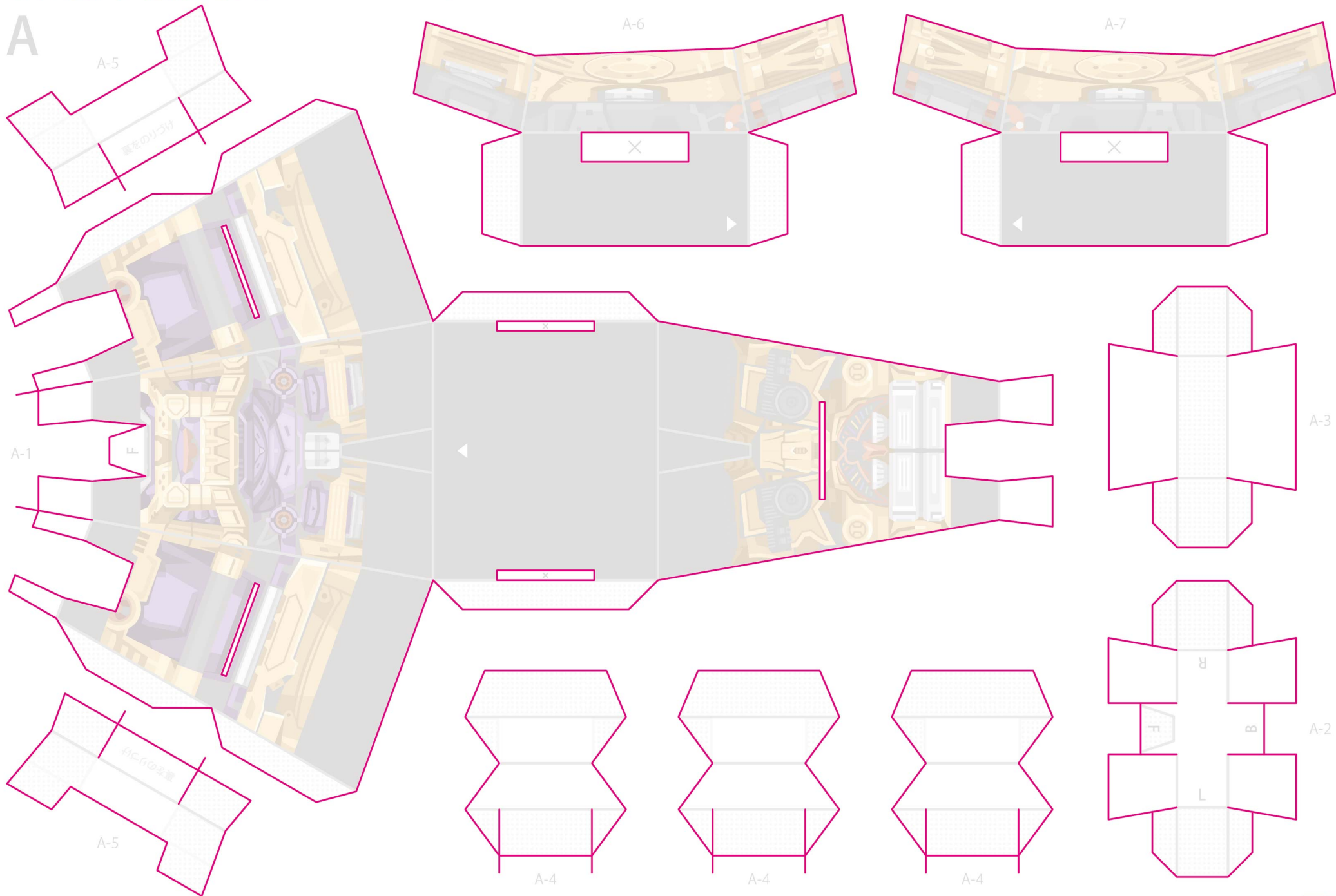
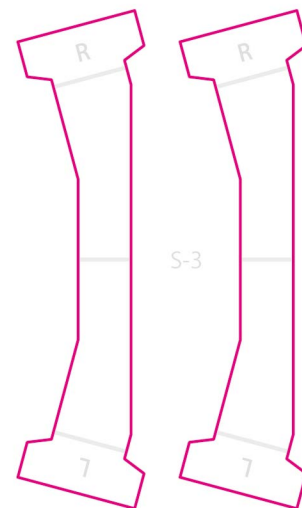
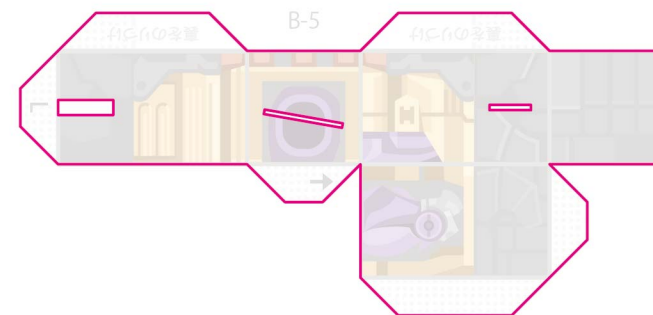
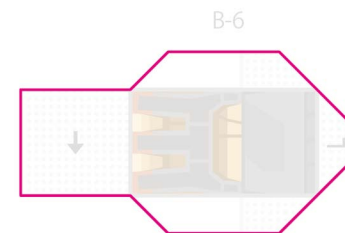
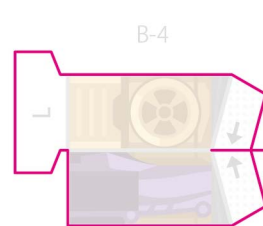
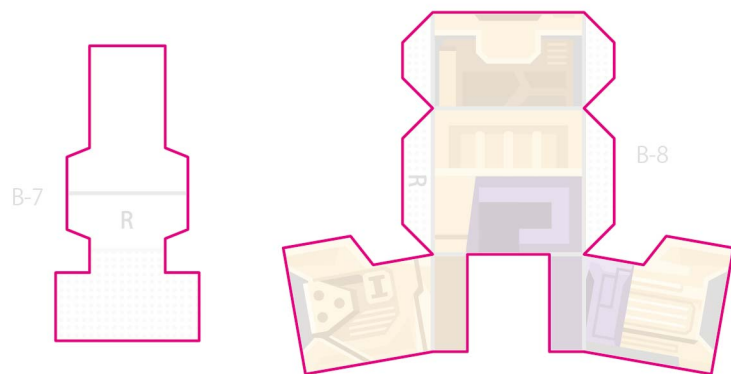
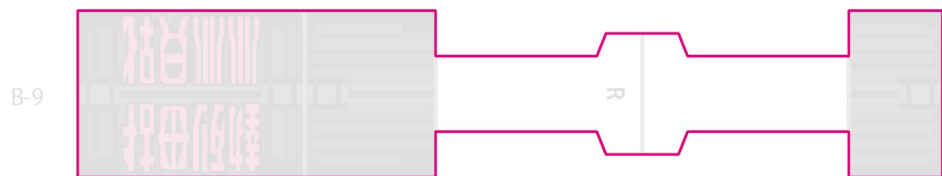
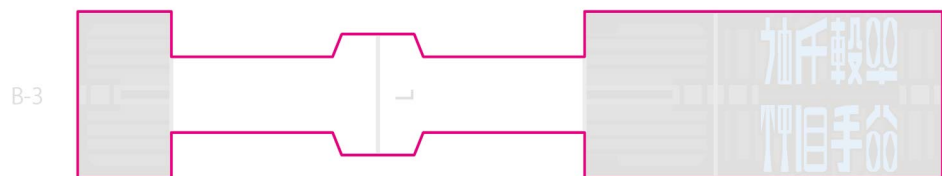
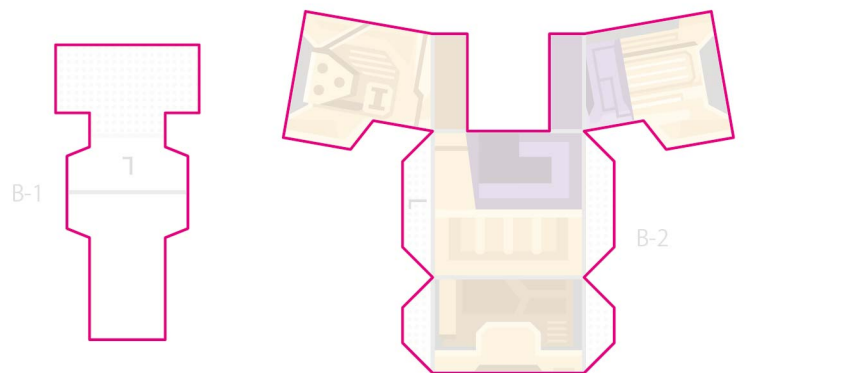


ピンクの線を参考に切り取ってください。 Cut with reference to the pink line

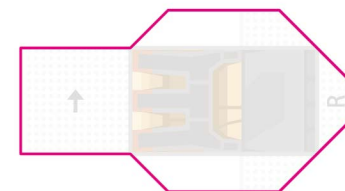
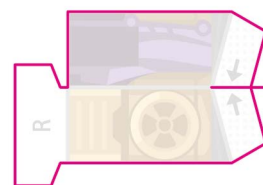
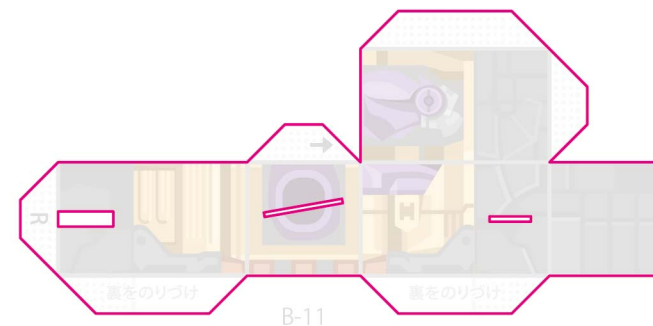


ピンクの線を参考に切り取ってください。 Cut with reference to the pink line

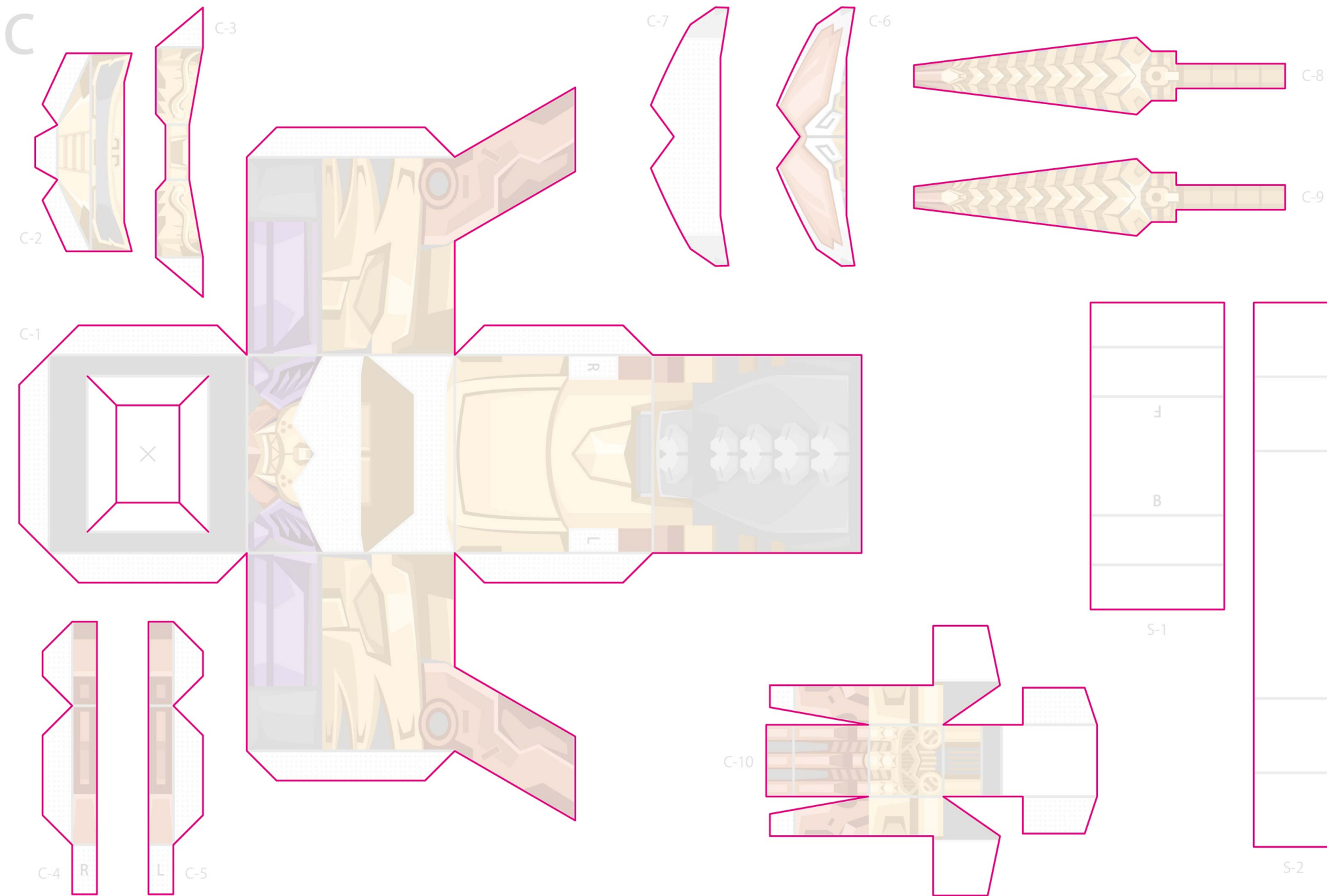
B



S-3は腕の角度を変えるための補助パーツです。
向きを変えることで、LR両方で使用できます。

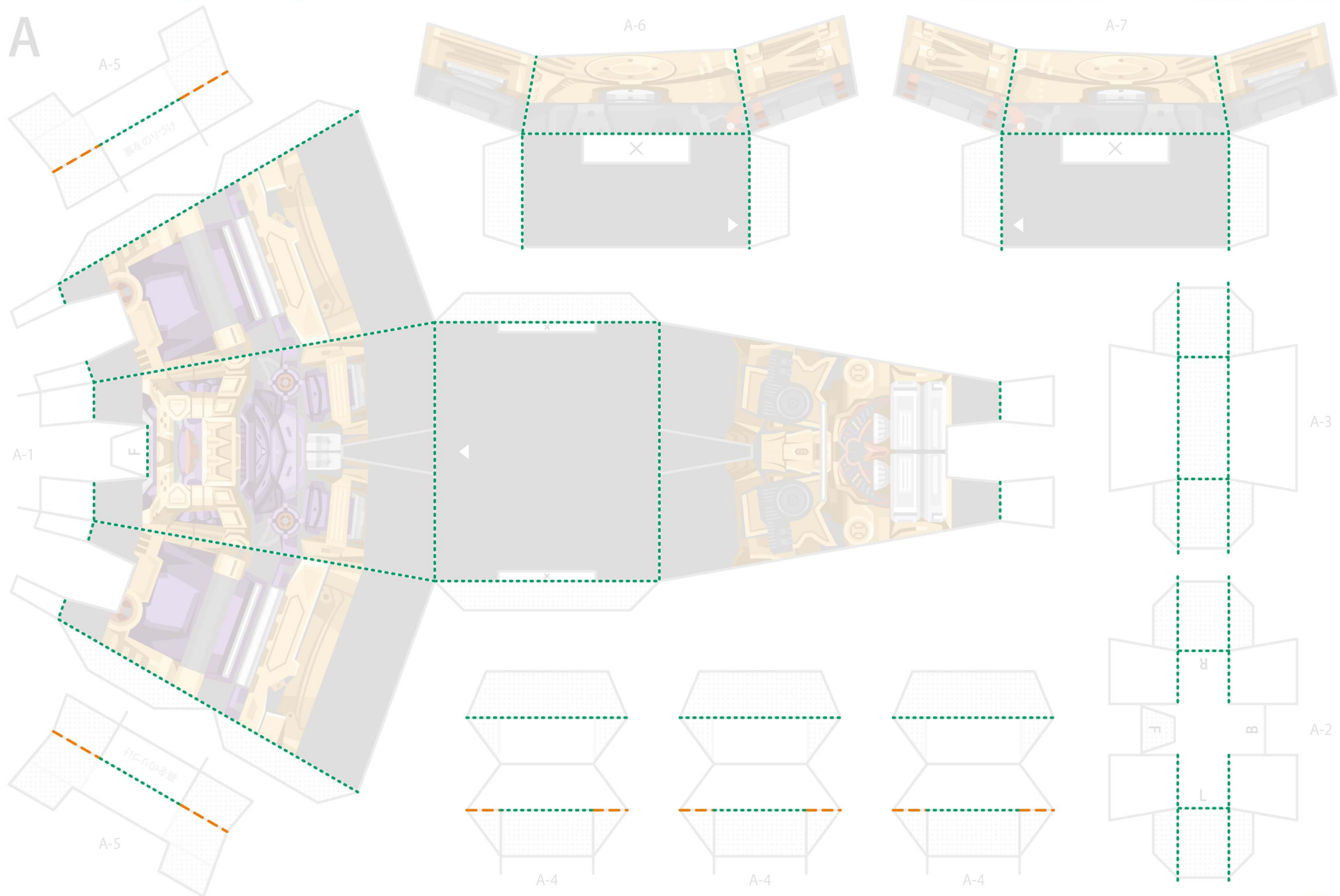


ピンクの線を参考に切り取ってください。 Cut with reference to the pink line



それぞれの点線を参考に折り目を付けてください。 Make a crease with reference to the dotted line

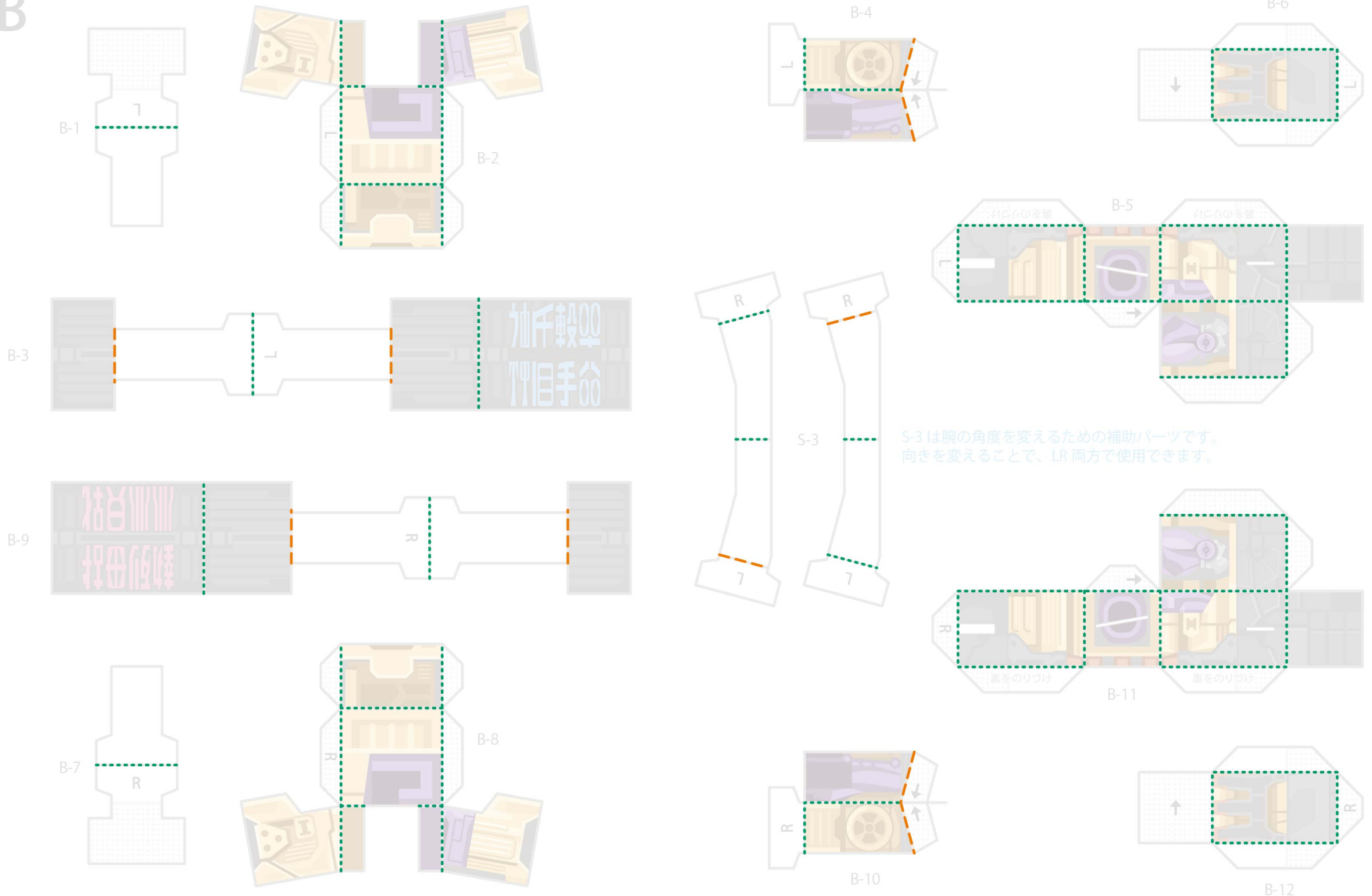
----- やまおり Mountain fold - - - - たにおり Valley fold



それぞれの点線を参考に折り目を付けてください。 Make a crease with reference to the dotted line

----- やまおり Mountain fold - - - - たにおり Valley fold

B



それぞれの点線を参考に折り目を付けてください。 Make a crease with reference to the dotted line

----- やまおり Mountain fold - - - - たにおり Valley fold

