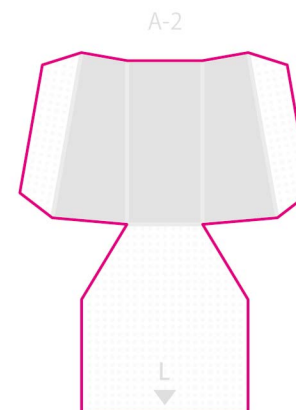
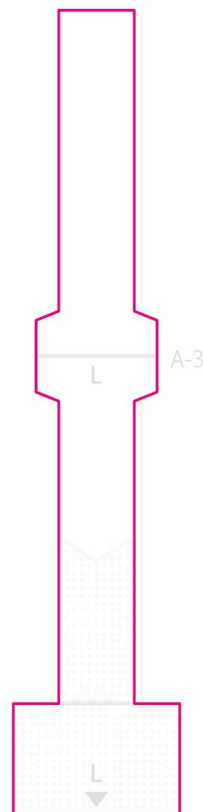
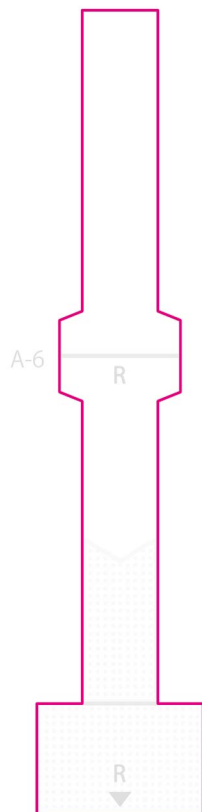
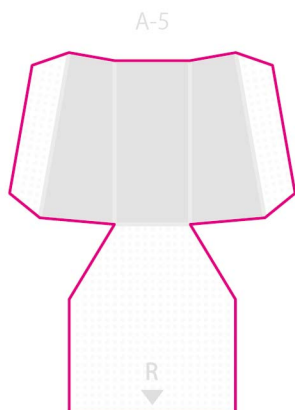
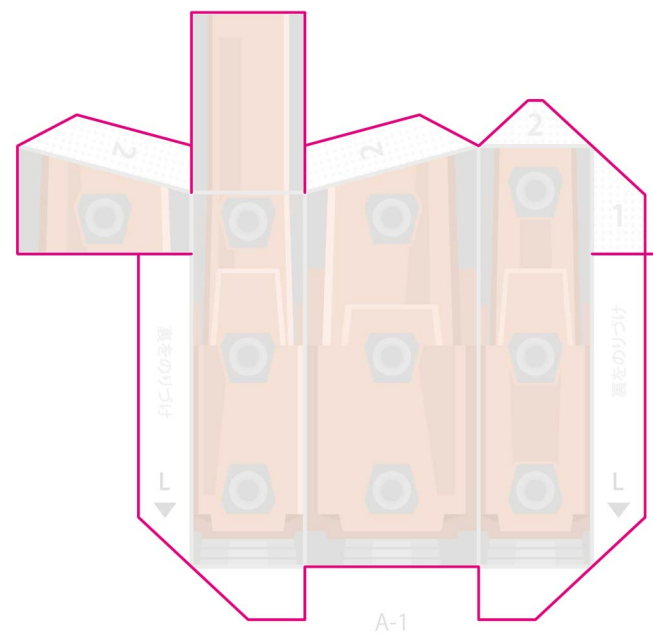
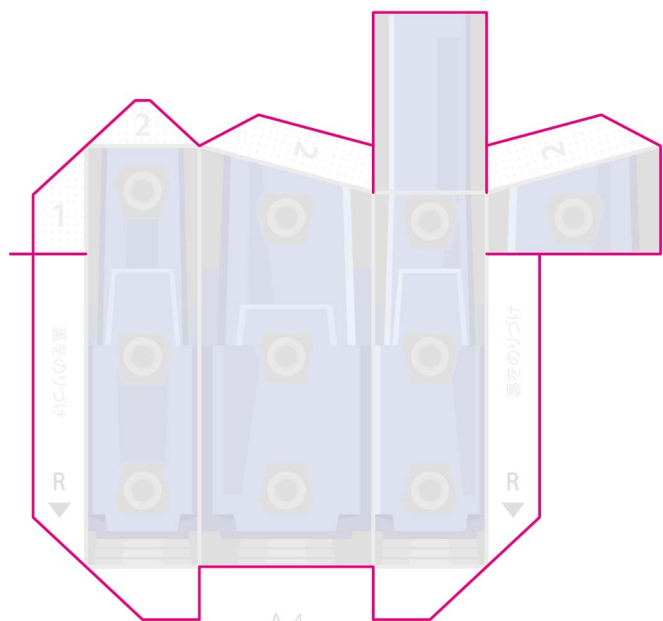


A

ピンクの線を参考に切り取ってください。 Cut with reference to the pink line

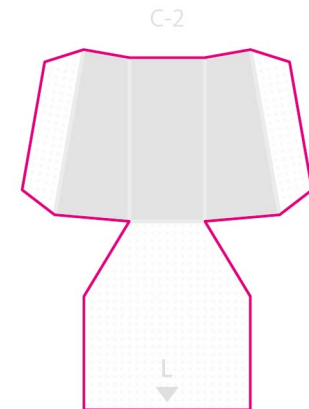
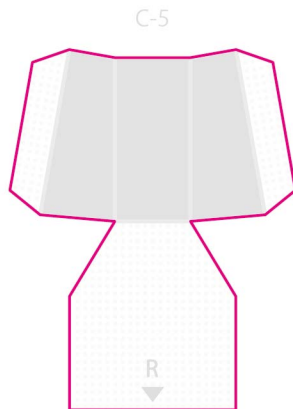
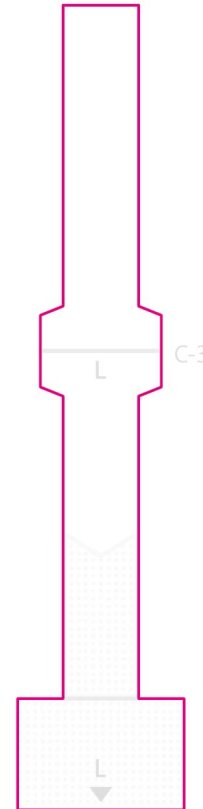
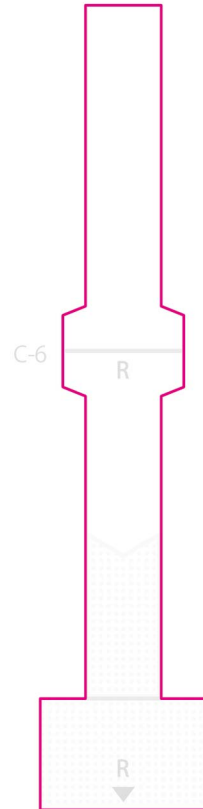
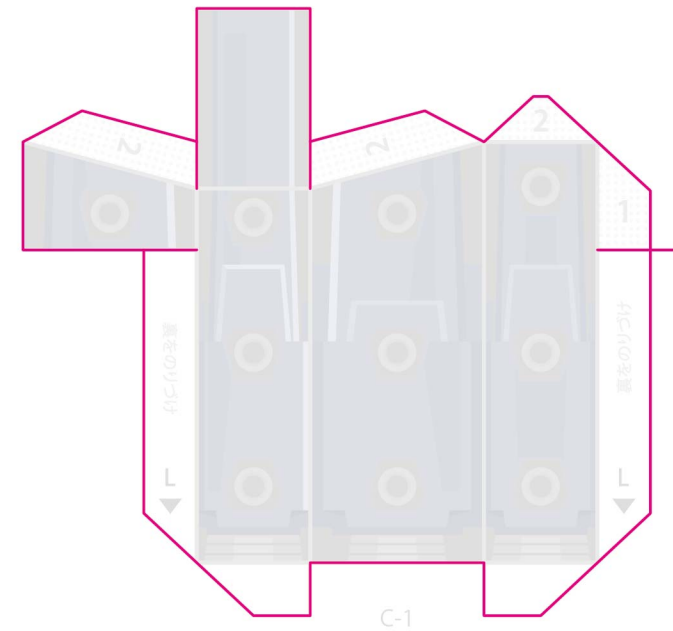
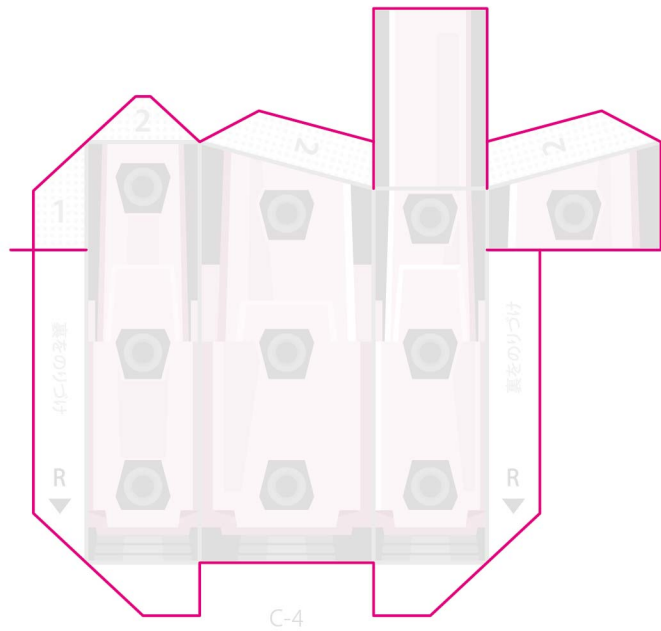
水色の線は貼り合わせた後に切り取ってください。 Cut the light blue line after gluing



C

ピンクの線を参考に切り取ってください。 Cut with reference to the pink line

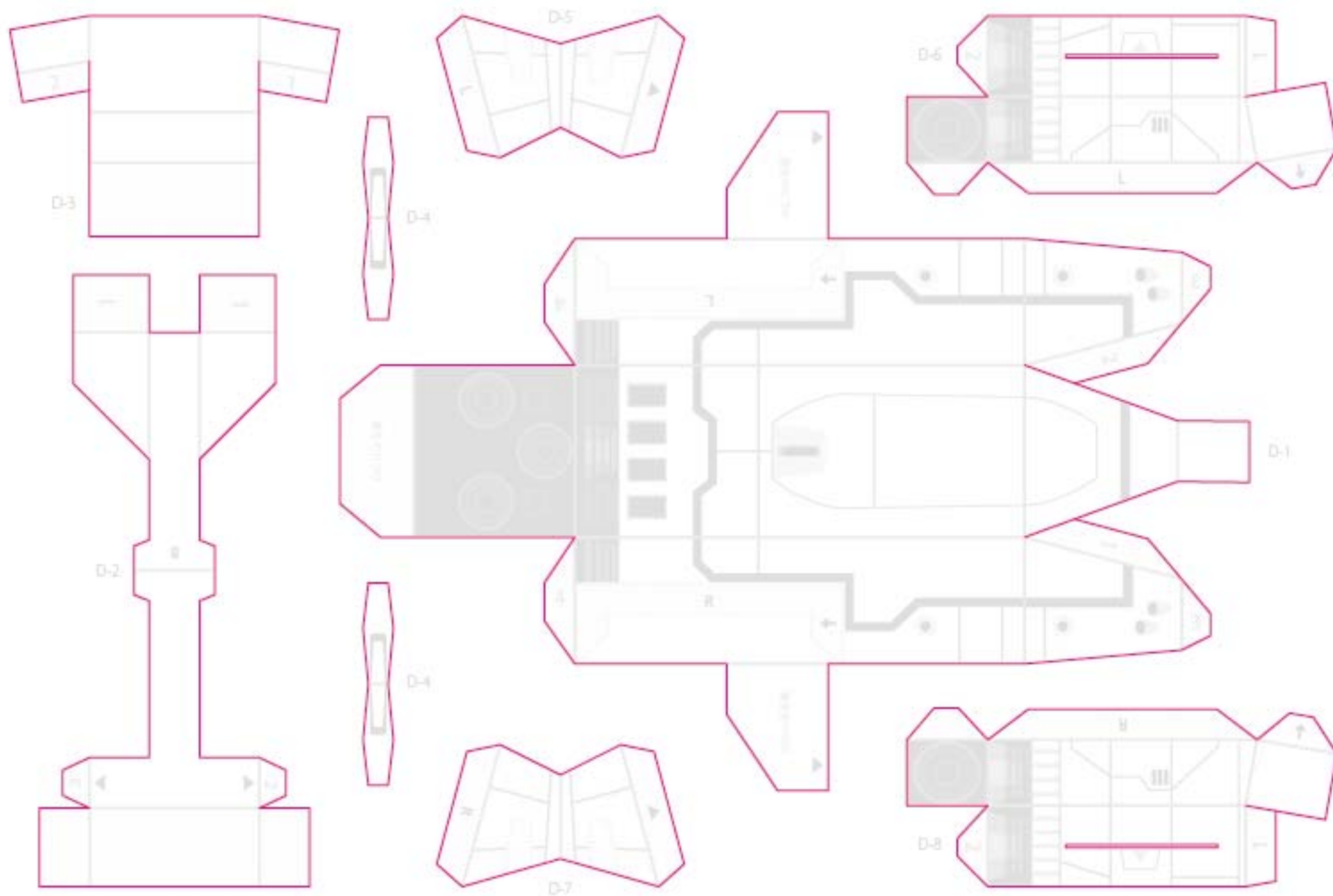
水色の線は貼り合わせた後に切り取ってください。 Cut the light blue line after gluing



D

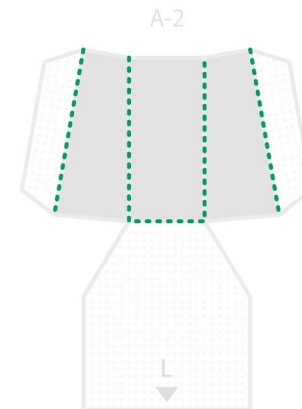
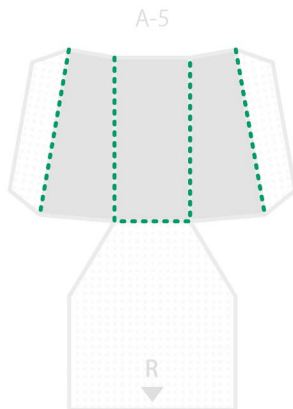
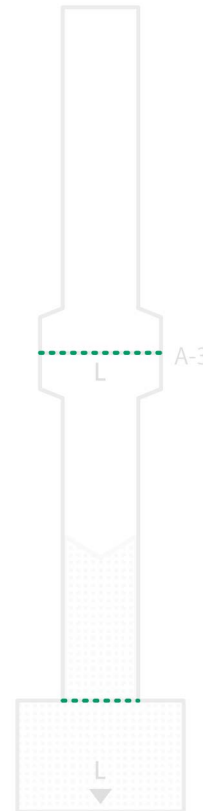
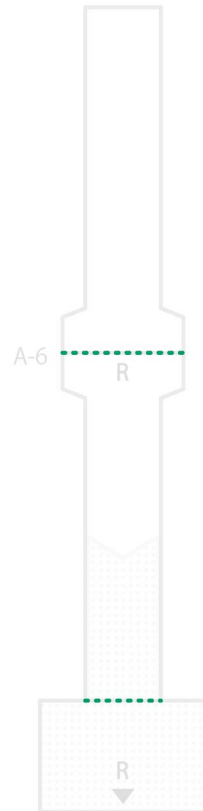
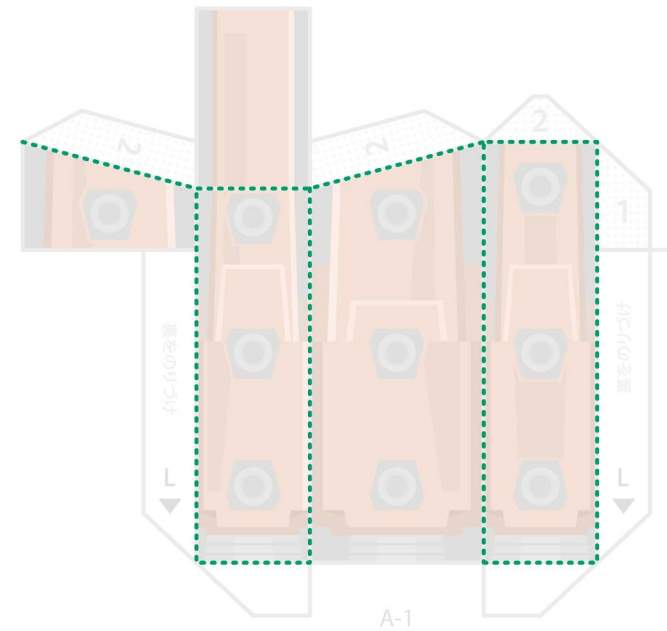
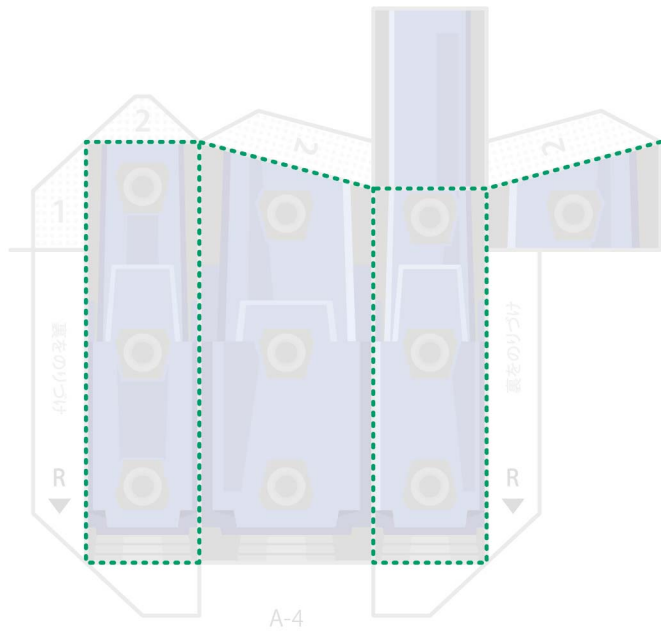
ピンクの線を参考に切り取ってください。Cut with reference to the pink line

水色の線は貼り合わせた後に切り取ってください。Cut the light blue line after gluing



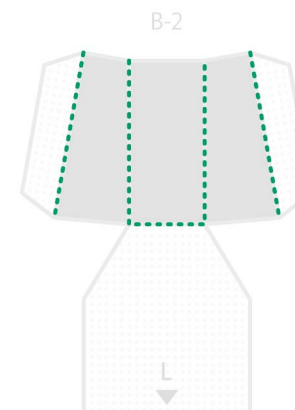
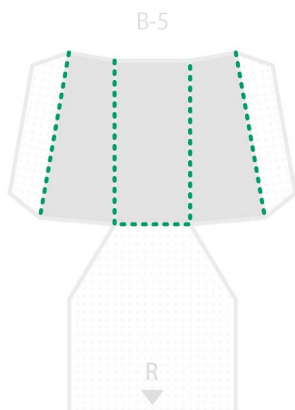
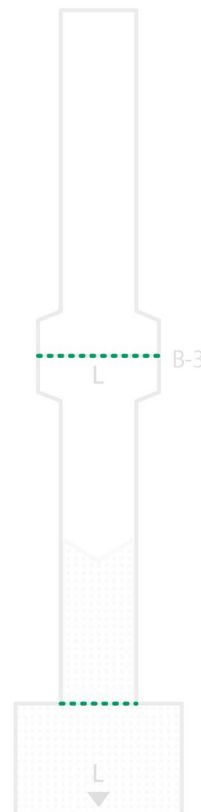
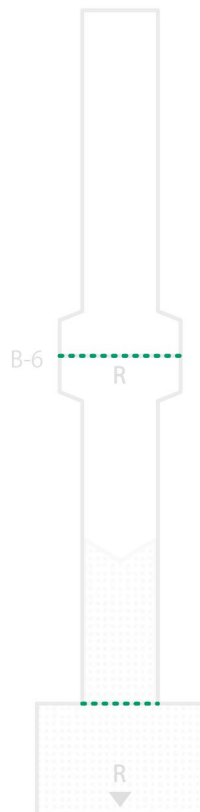
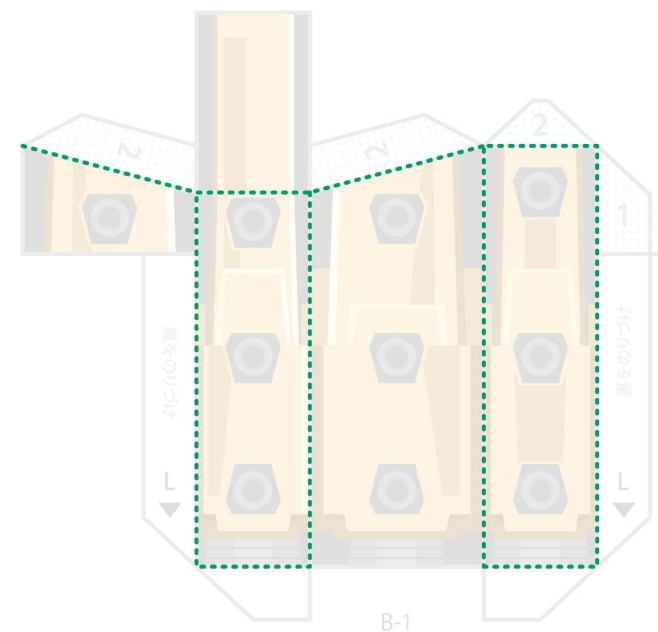
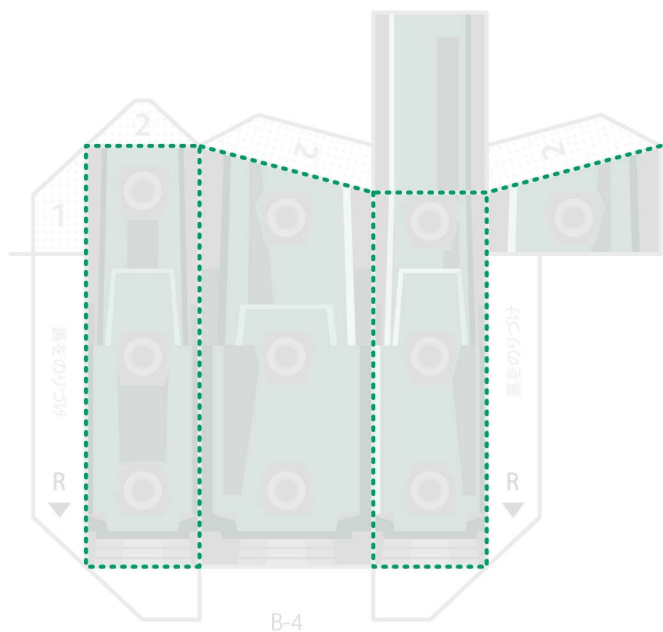
A それぞれの点線を参考に折り目を付けてください。 Make a crease with reference to the dotted line

..... やまおり Mountain fold - - - - たにおり Valley fold



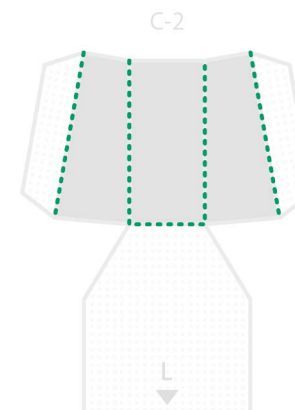
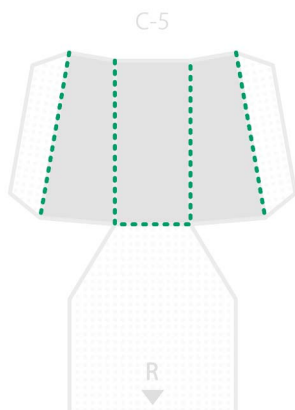
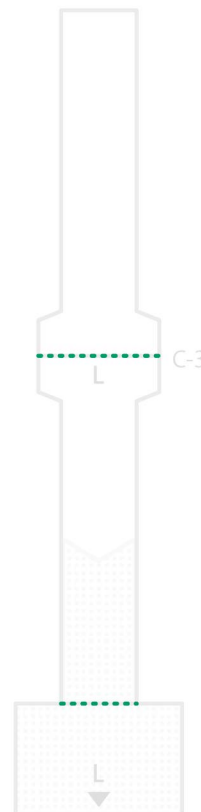
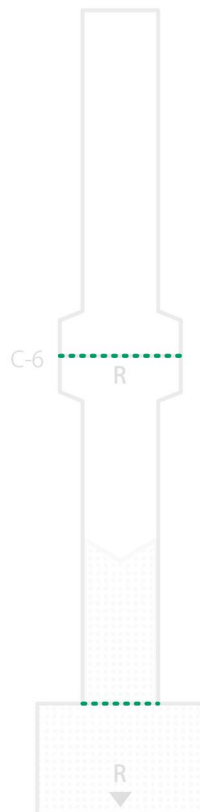
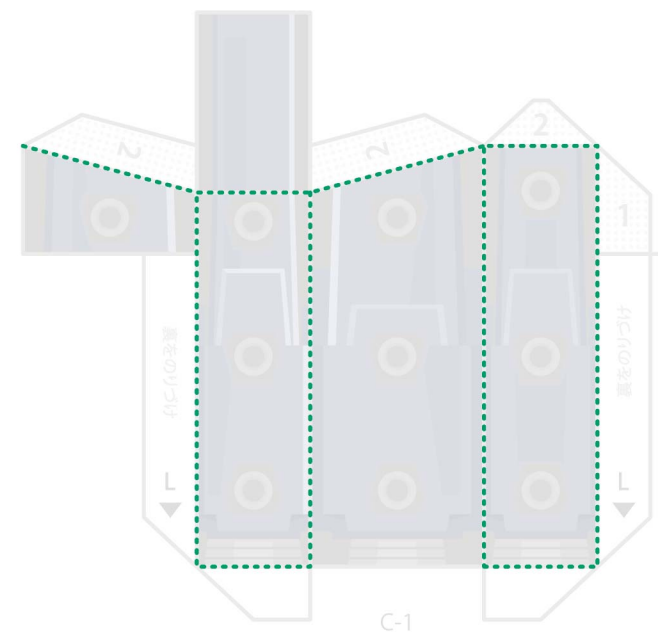
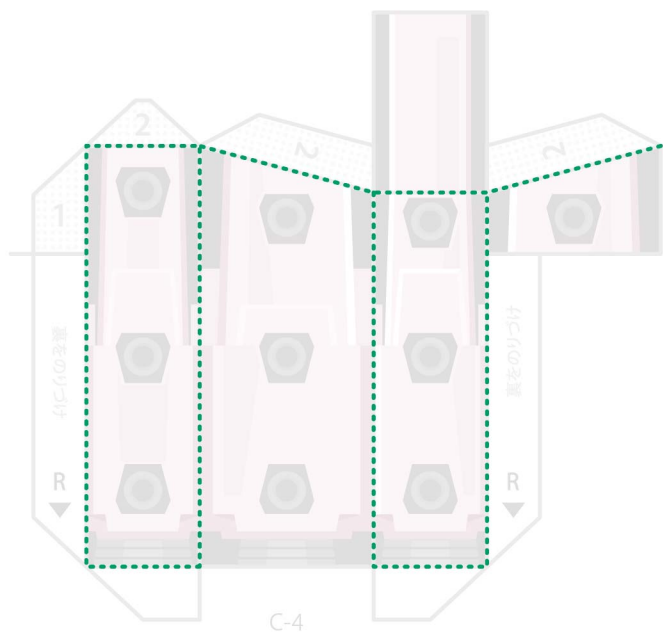
B それぞれの点線を参考に折り目を付けてください。 Make a crease with reference to the dotted line

..... やまおり Mountain fold - - - - たにおり Valley fold



C それぞれの点線を参考に折り目を付けてください。 Make a crease with reference to the dotted line

..... やまおり Mountain fold - - - - たにおり Valley fold



D それぞれの点線を参考に折り目を付けてください。 Make a crease with reference to the dotted line

..... やまおり Mountain fold - - - - たにおり Valley fold

