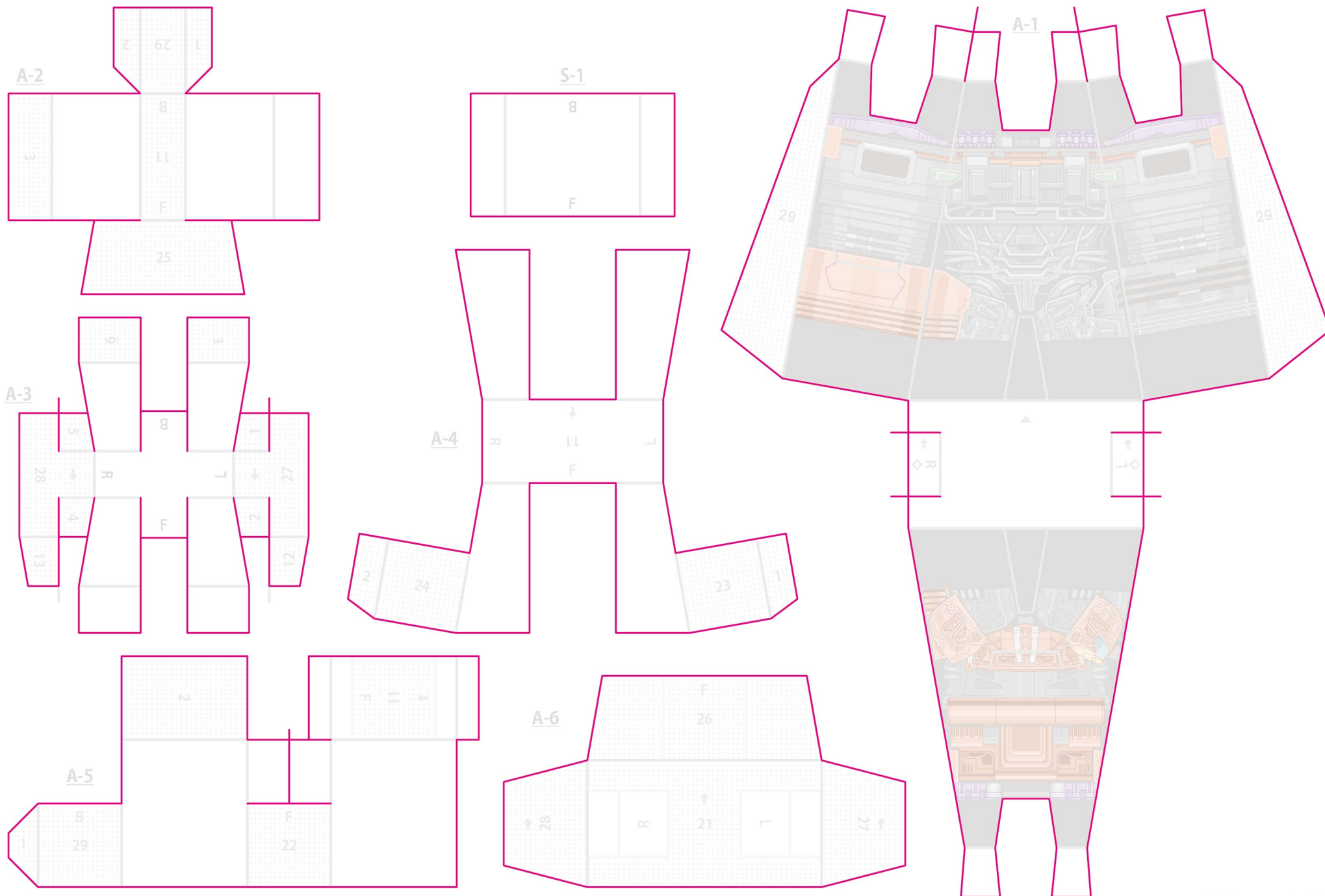


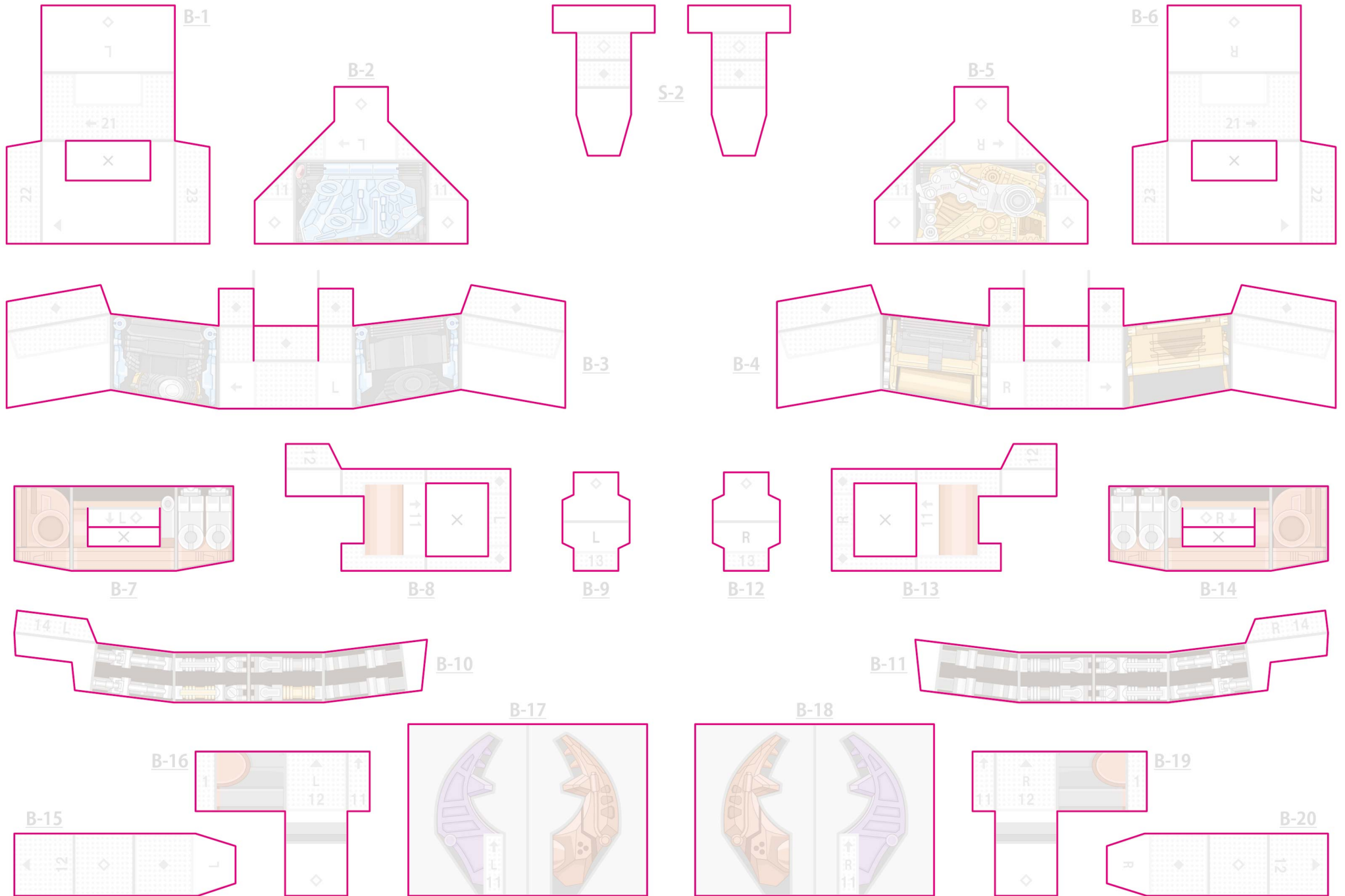
# A

ピンクの線を参考に切り取ってください。 Cut with reference to the pink line



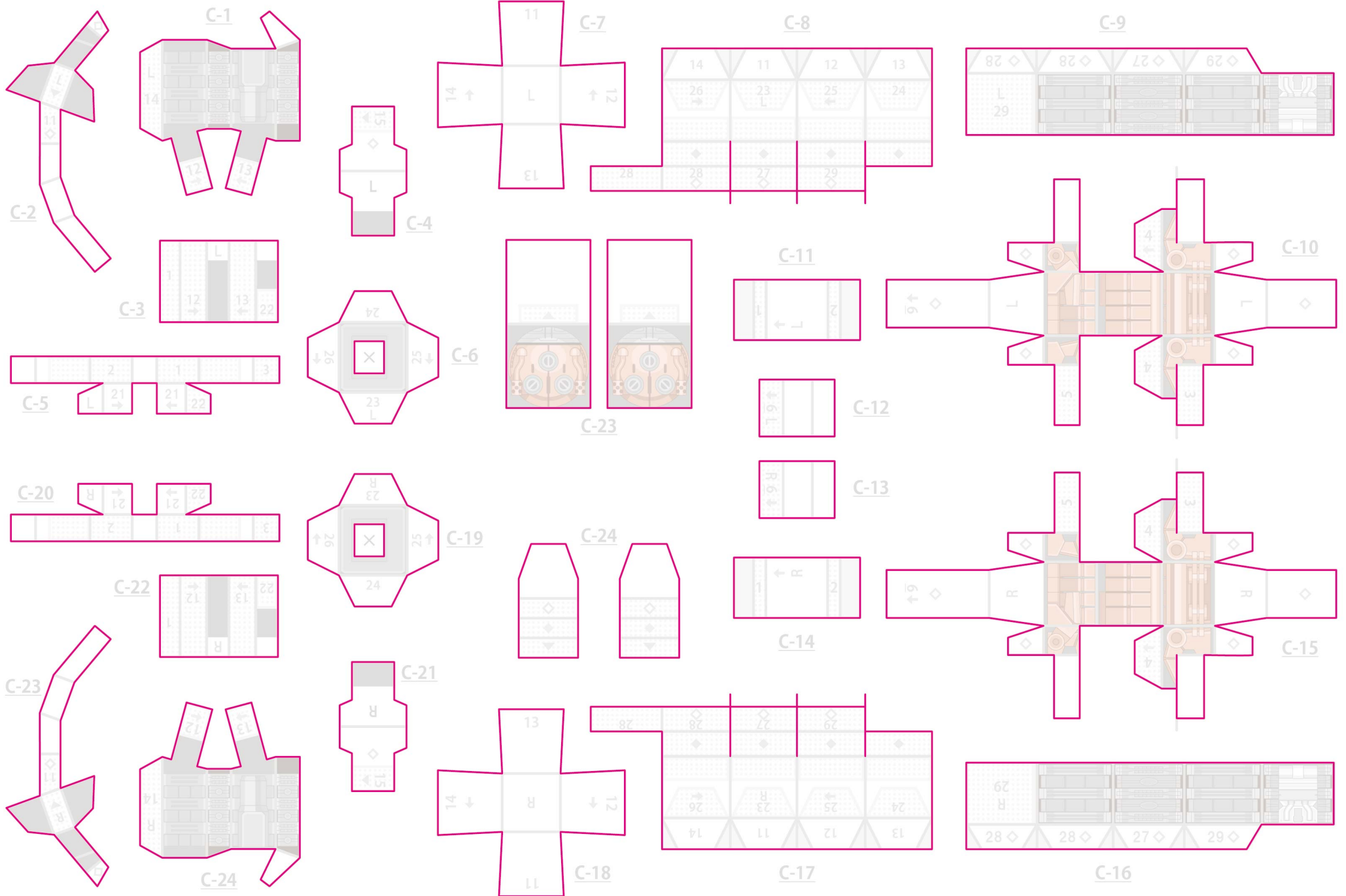
# B

ピンクの線を参考に切り取ってください。 Cut with reference to the pink line

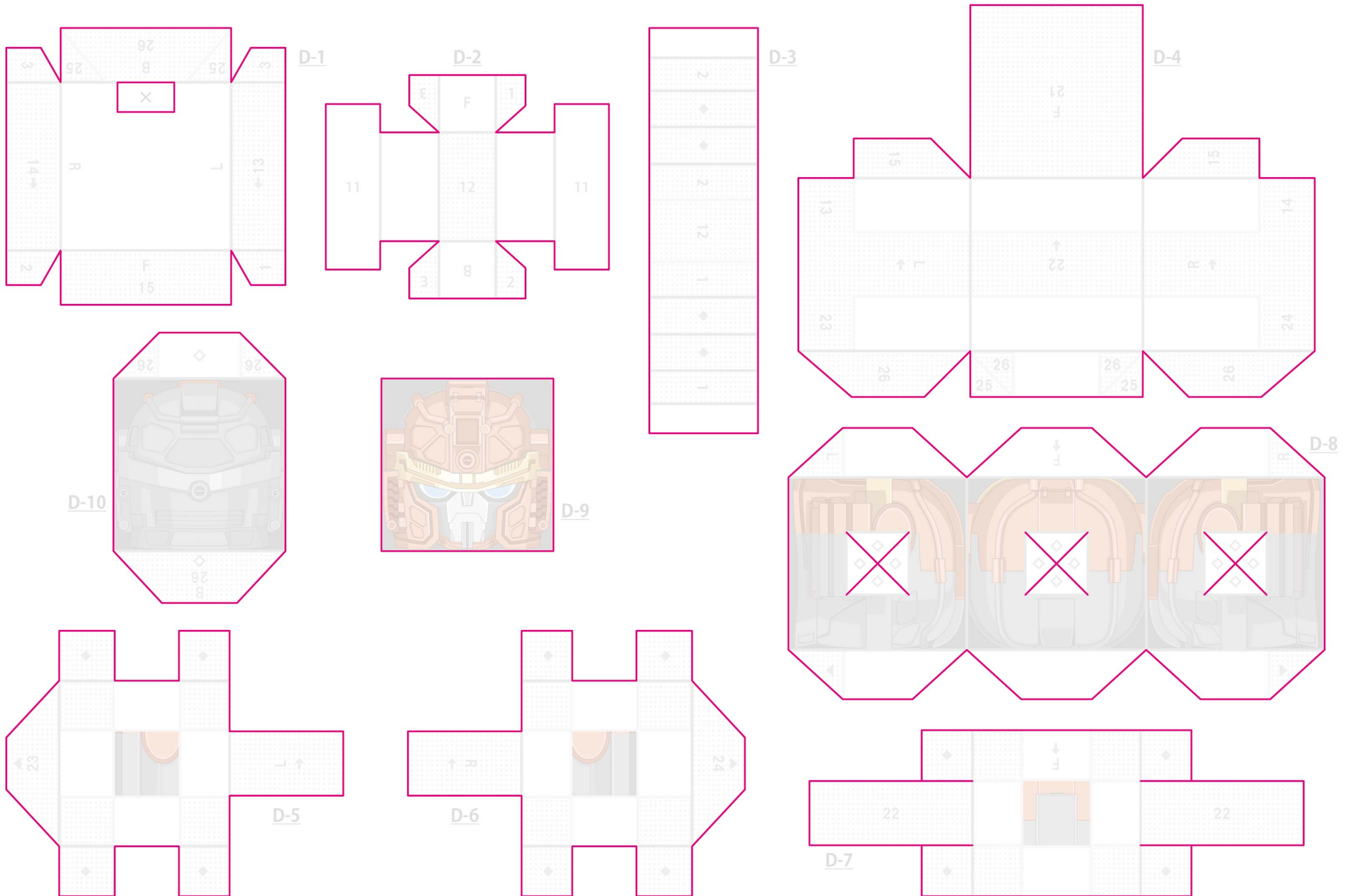


# C

ピンクの線を参考に切り取ってください。 Cut with reference to the pink line



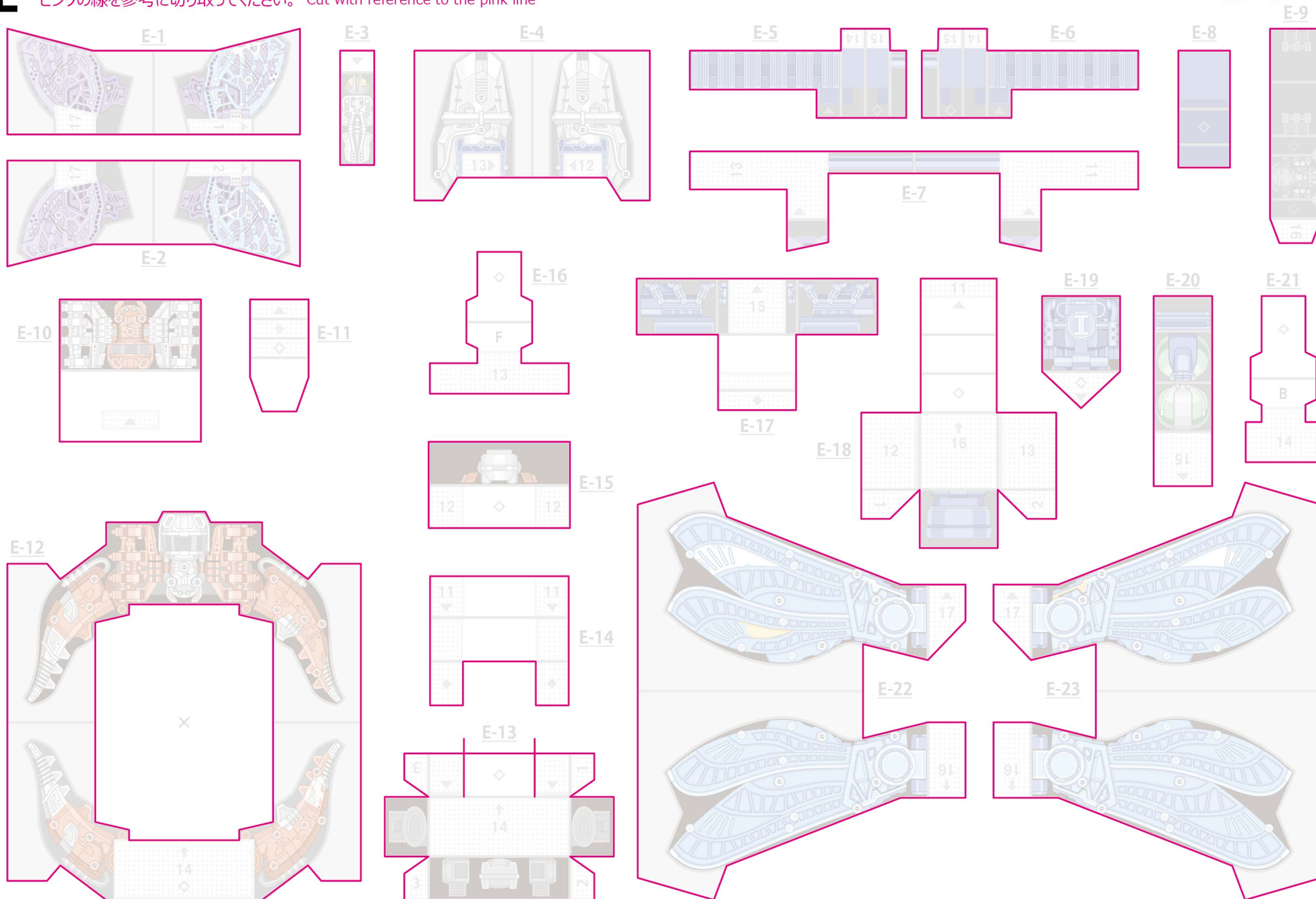
**D** ピンクの線を参考に切り取ってください。 Cut with reference to the pink line





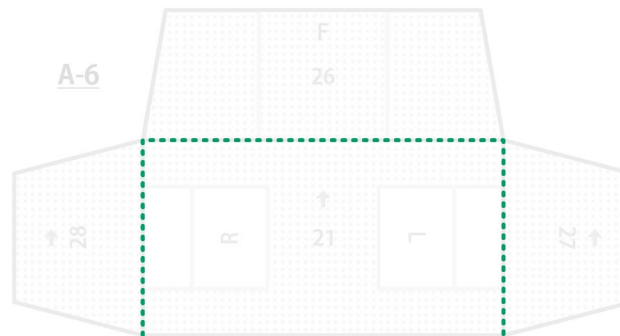
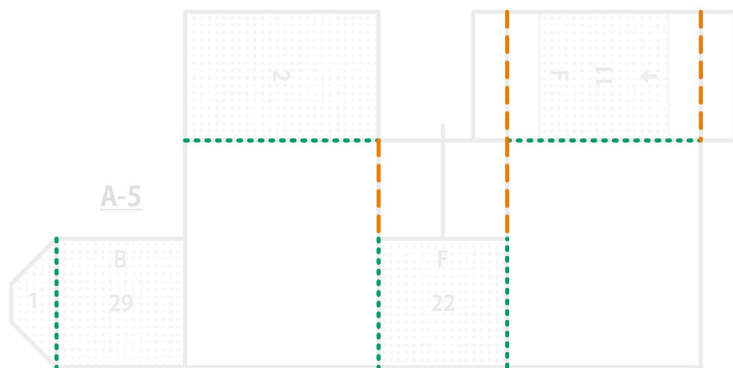
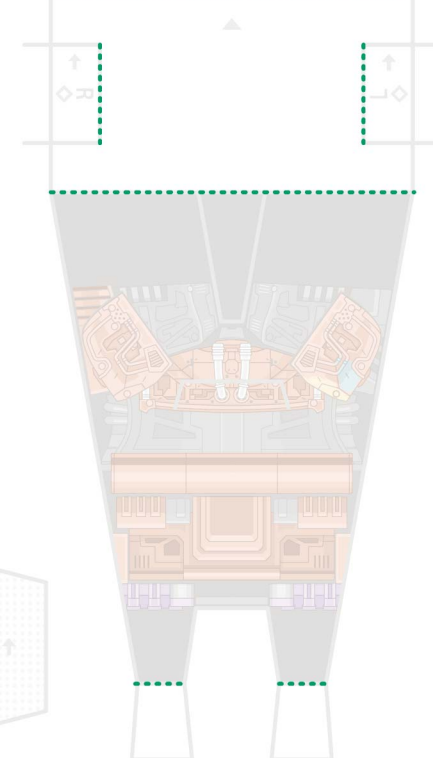
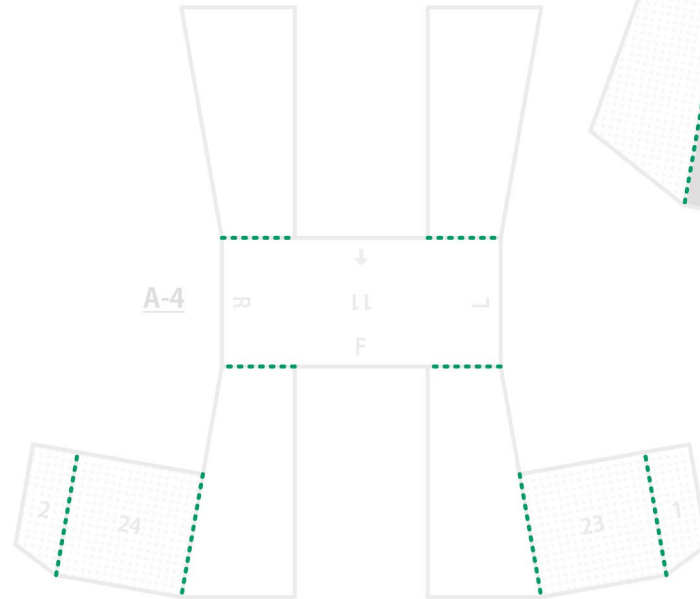
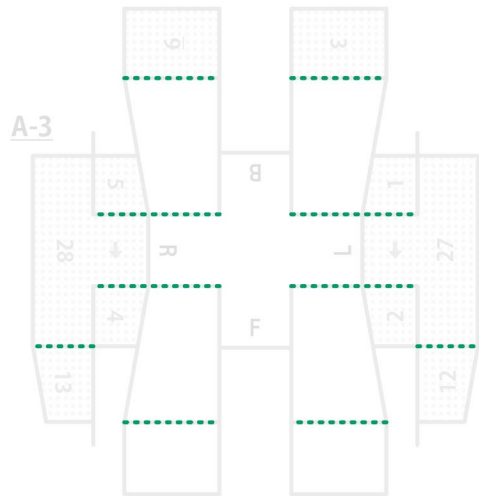
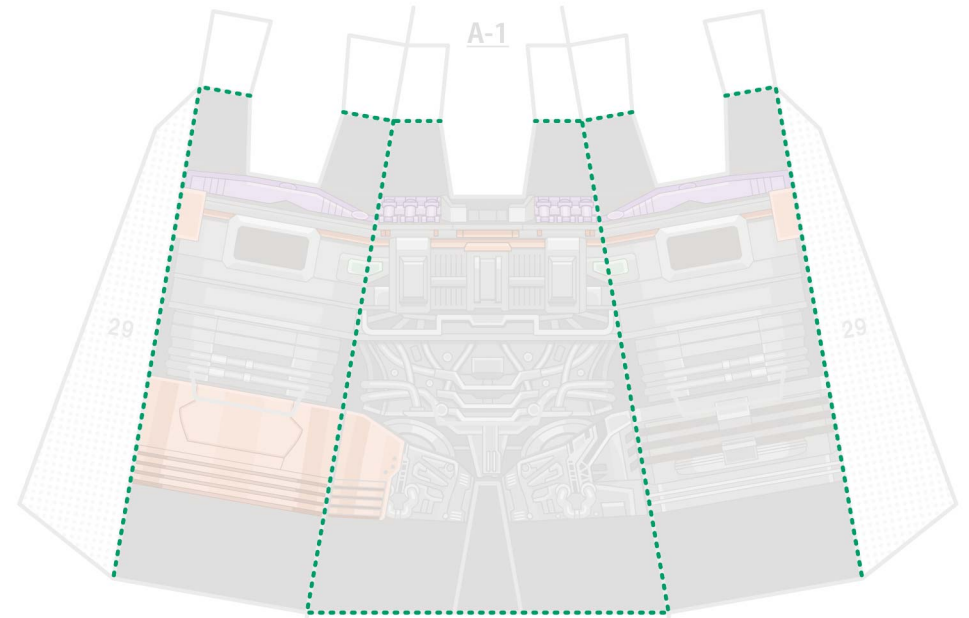
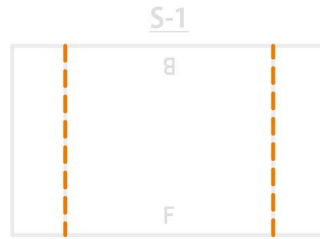
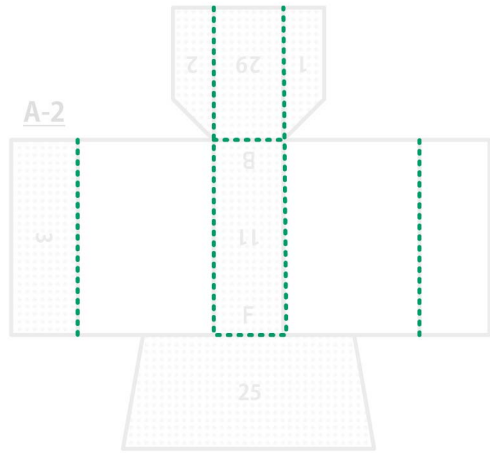
# E

ピンクの線を参考に切り取ってください。 Cut with reference to the pink line



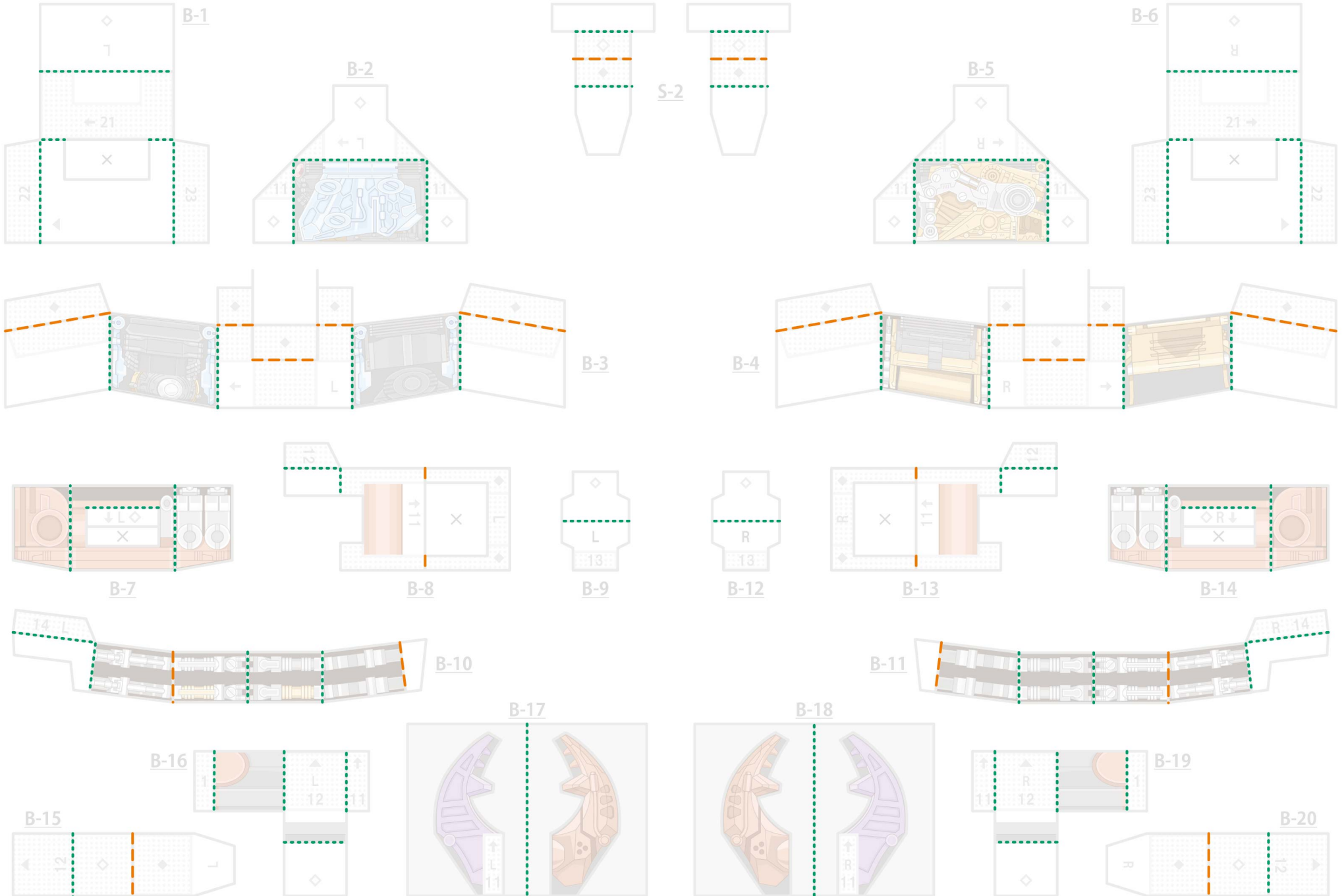
**A** それぞれの点線を参考に折り目を付けてください。 Make a crease with reference to the dotted line

..... やまおり Mountain fold    - - - - たにおり Valley fold



**B** それぞれの点線を参考に折り目を付けてください。 Make a crease with reference to the dotted line

----- やまおり Mountain fold    - - - - たにおり Valley fold

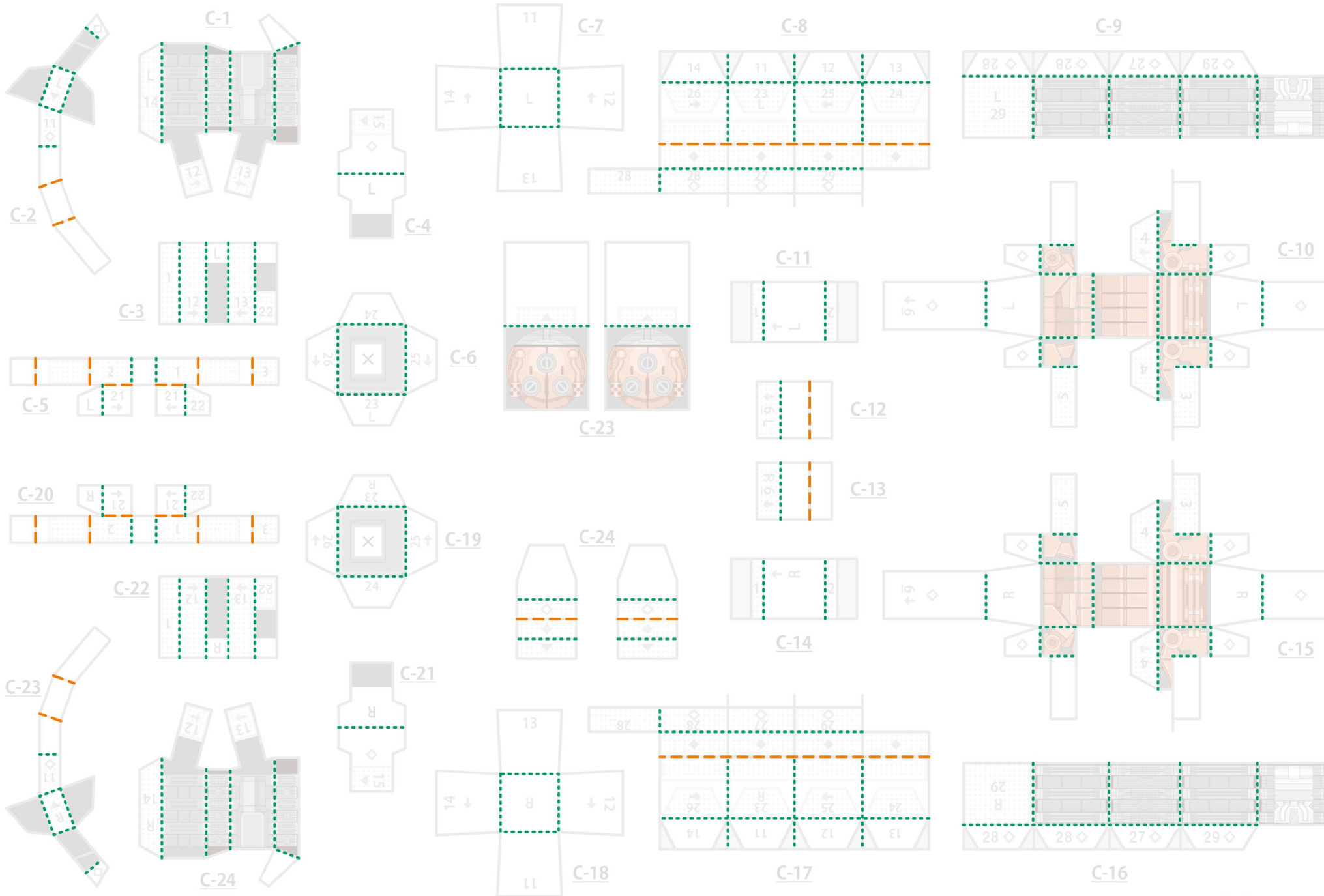




# C

それぞれの点線を参考に折り目を付けてください。 Make a crease with reference to the dotted line

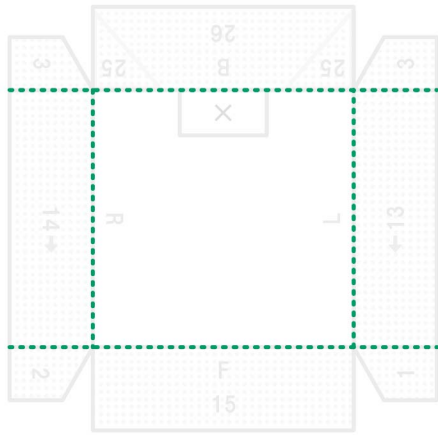
..... やまおり Mountain fold    - - - - たにおり Valley fold



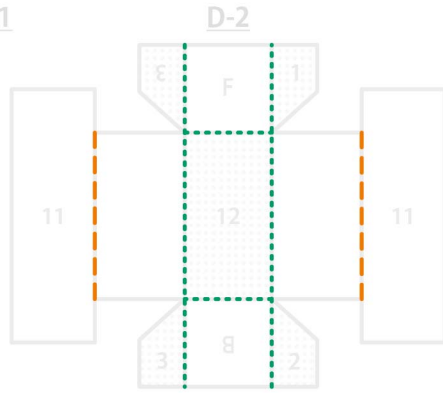


**D** それぞれの点線を参考に折り目を付けてください。 Make a crease with reference to the dotted line

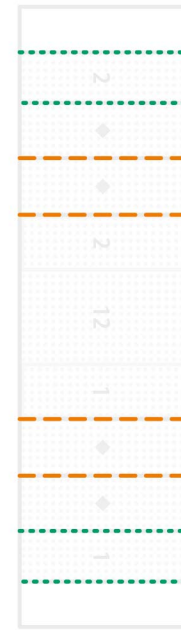
----- やまおり Mountain fold    - - - - たにおり Valley fold



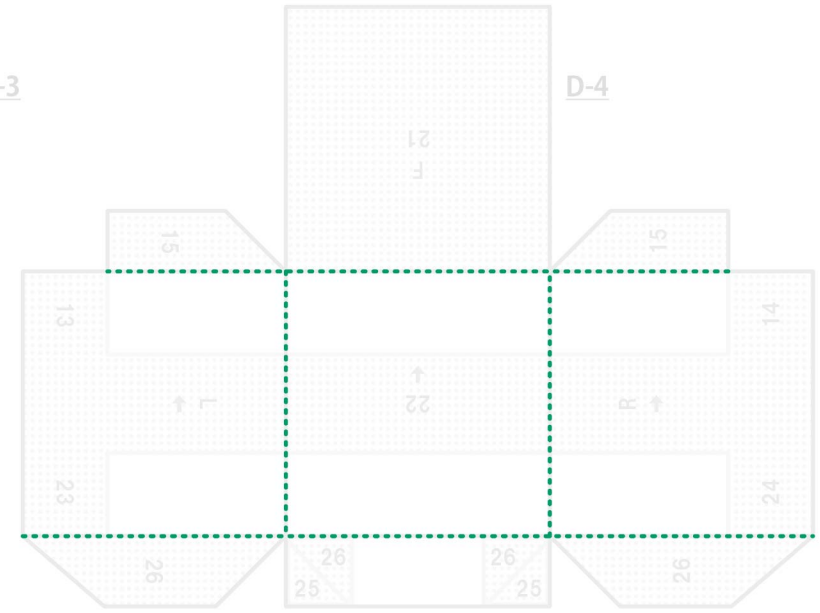
D-1



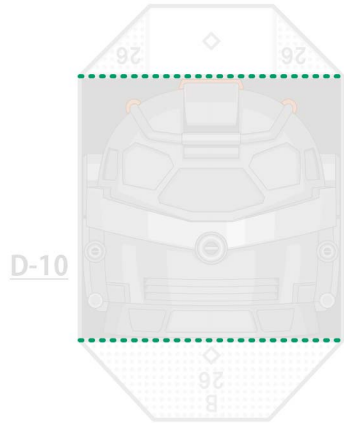
D-2



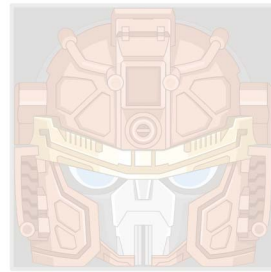
D-3



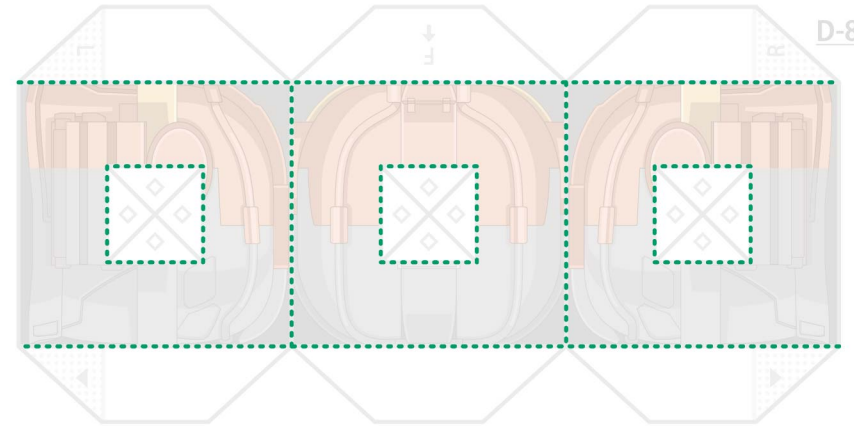
D-4



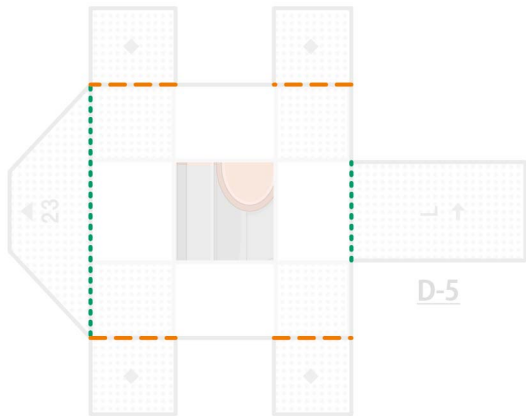
D-10



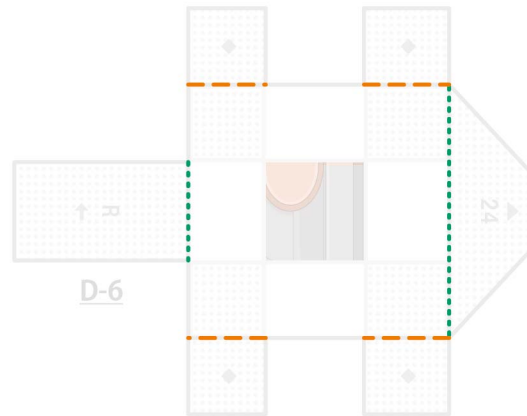
D-9



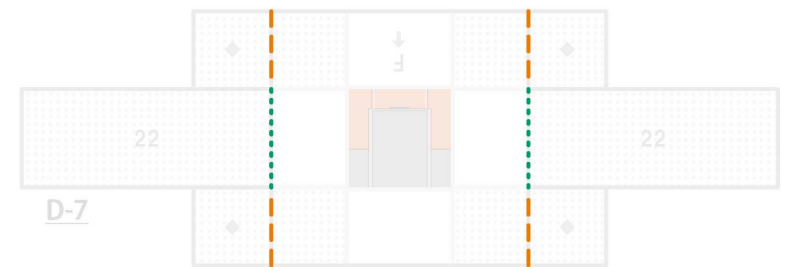
D-8



D-5



D-6



D-7

**E** それぞれの点線を参考に折り目を付けてください。 Make a crease with reference to the dotted line

----- やまおり Mountain fold    - - - - たにおり Valley fold

