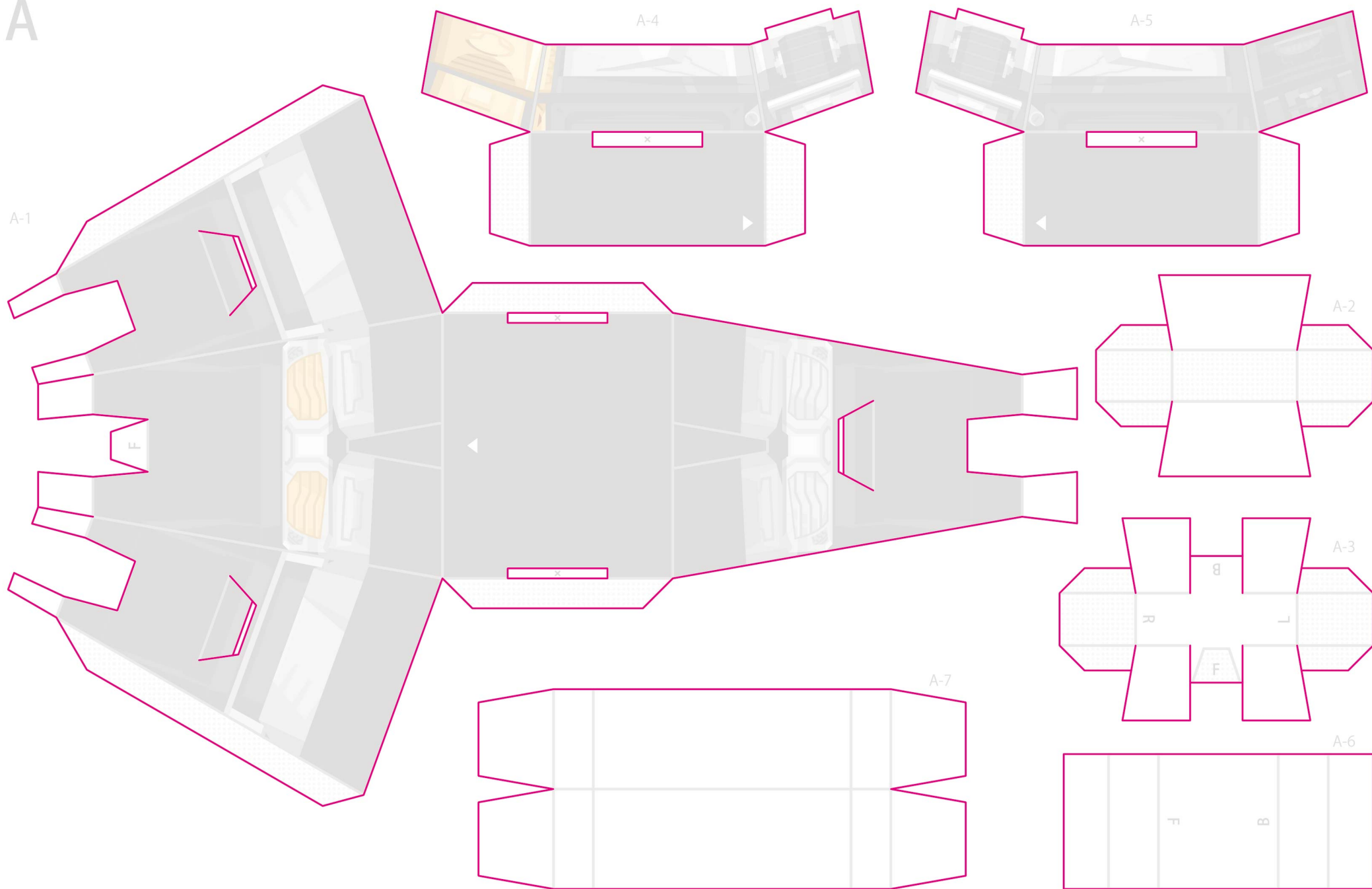


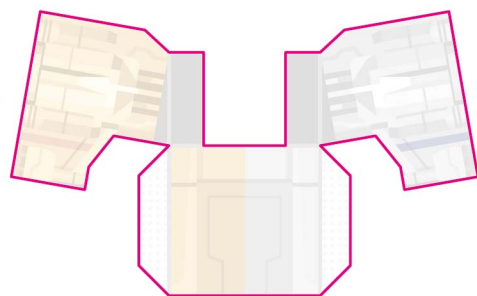
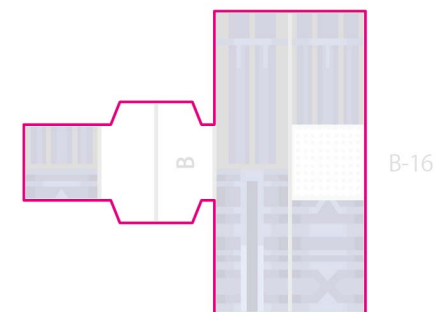
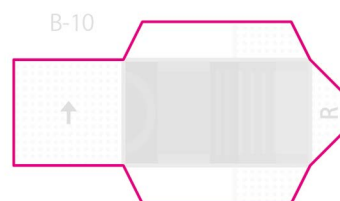
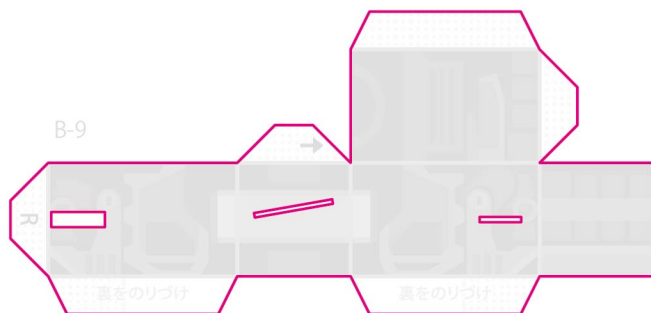
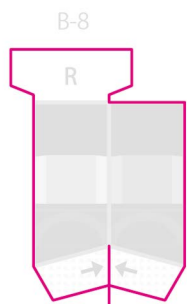
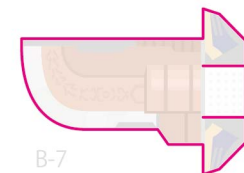
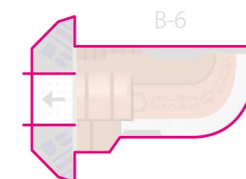
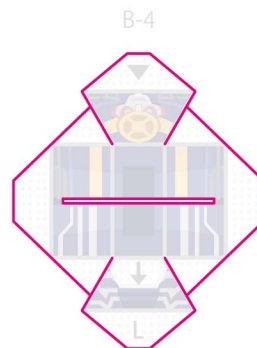
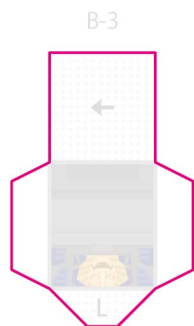
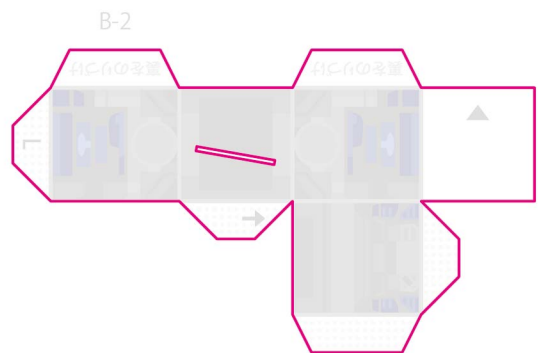
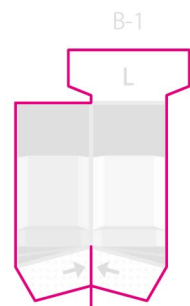
ピンクの線を参考に切り取ってください。 Cut with reference to the pink line

A

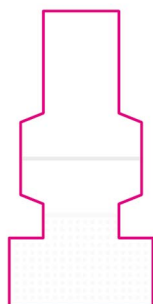


ピンクの線を参考に切り取ってください。 Cut with reference to the pink line

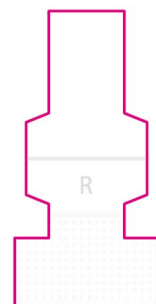
B



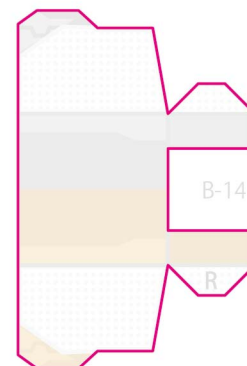
B-11



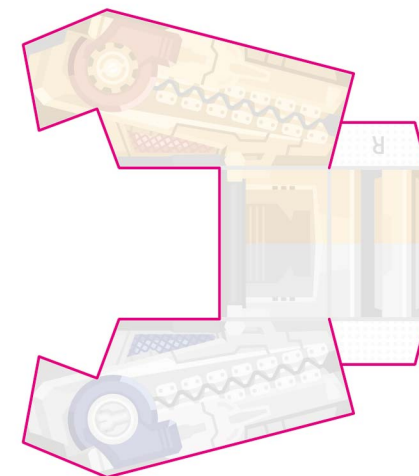
B-12



B-13



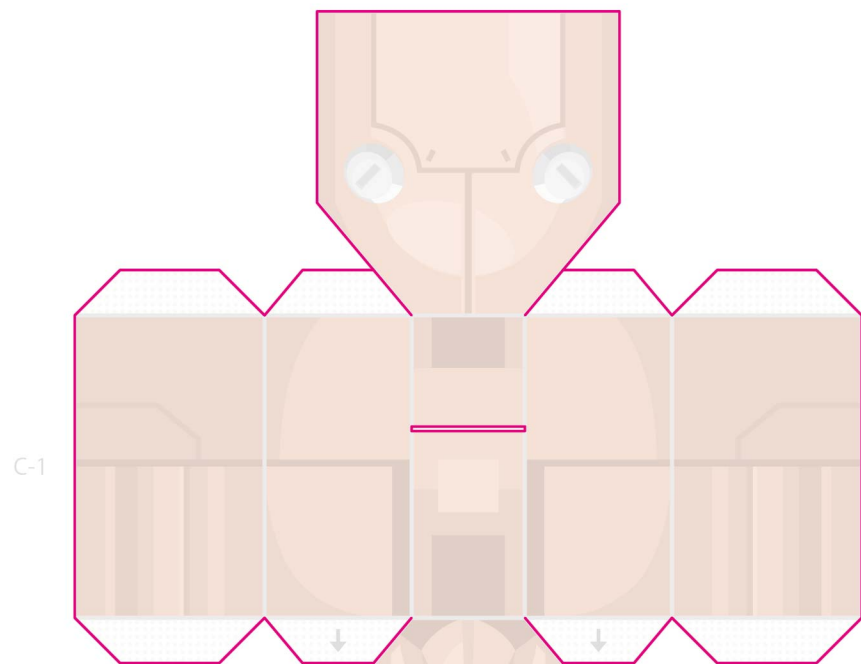
B-14



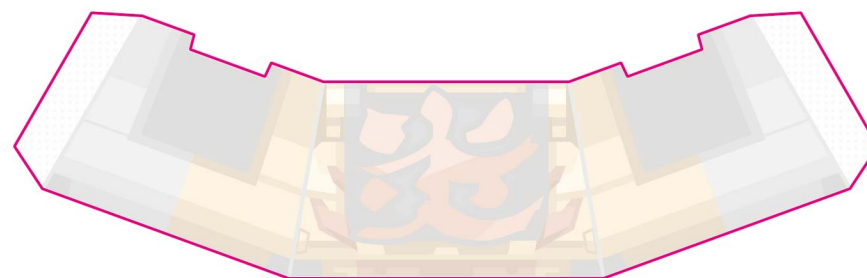
B-15

ピンクの線を参考に切り取ってください。 Cut with reference to the pink line

C



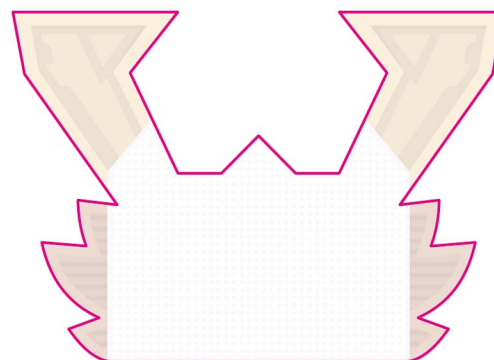
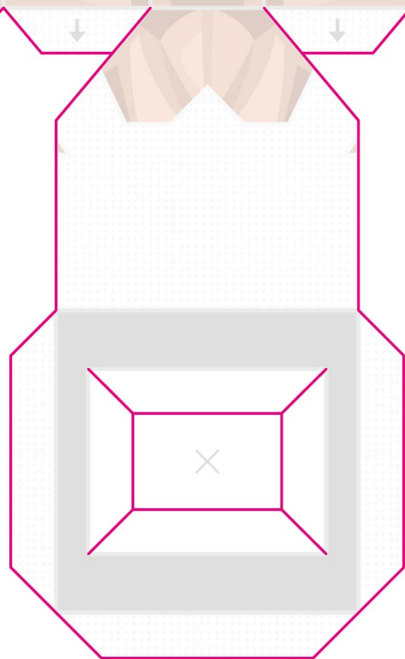
C-6



C-5



C-2



C-4

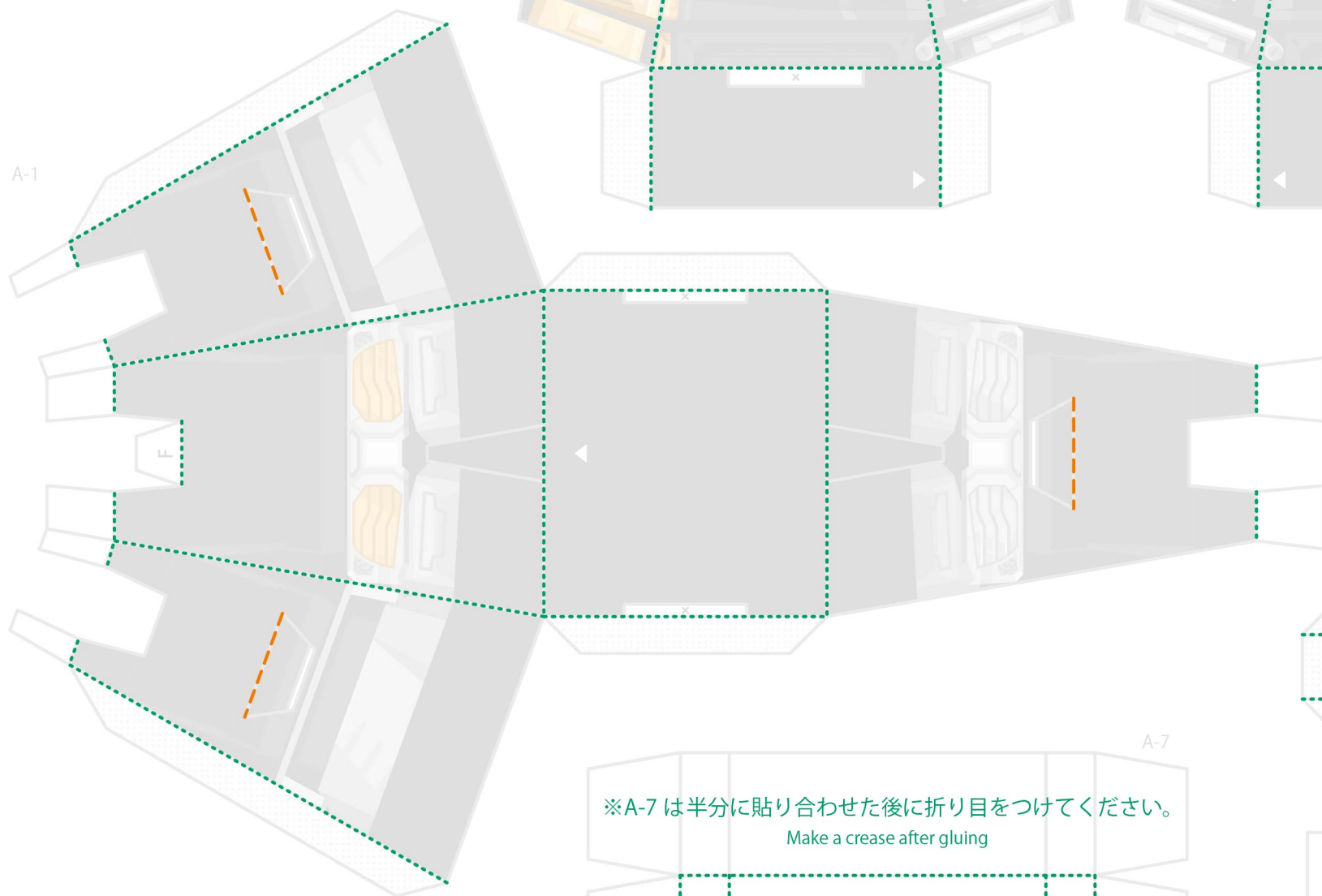


C-3

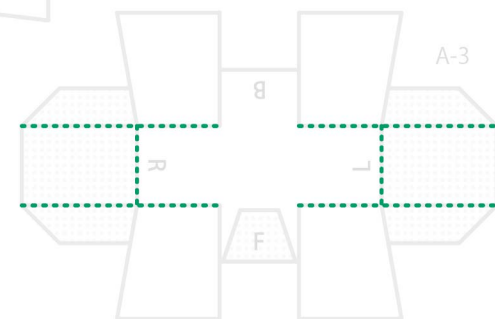
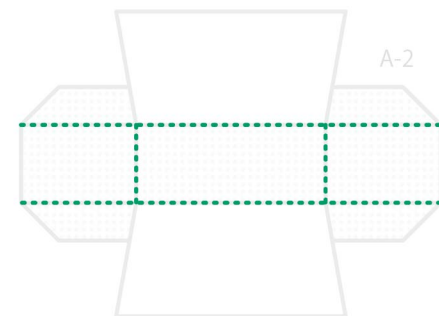
それぞれの点線を参考に折り目を付けてください。 Make a crease with reference to the dotted line

----- やまおり Mountain fold - - - - たにおり Valley fold

A

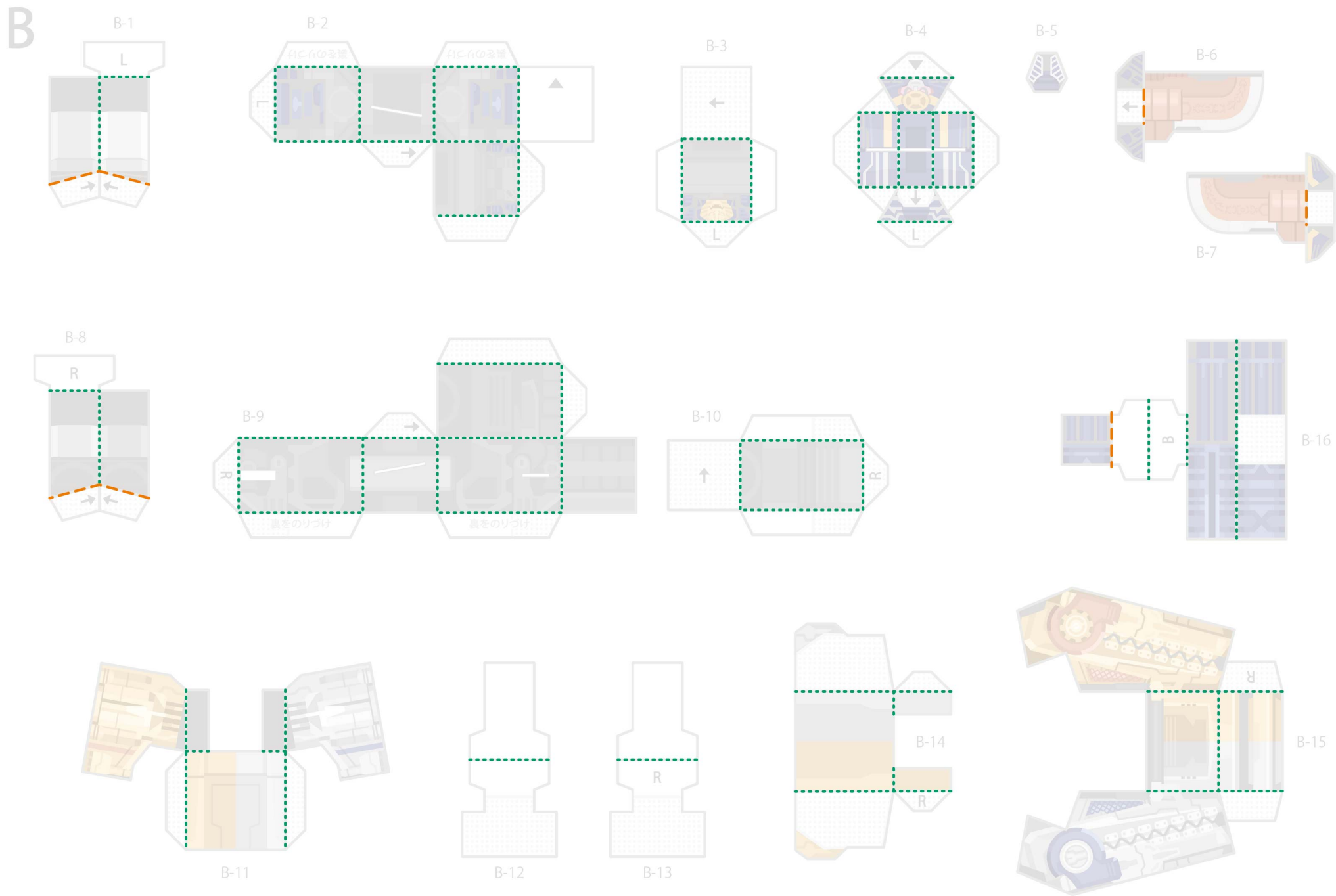


※A-7 は半分に貼り合わせた後に折り目をつけてください。
Make a crease after gluing



それぞれの点線を参考に折り目を付けてください。 Make a crease with reference to the dotted line

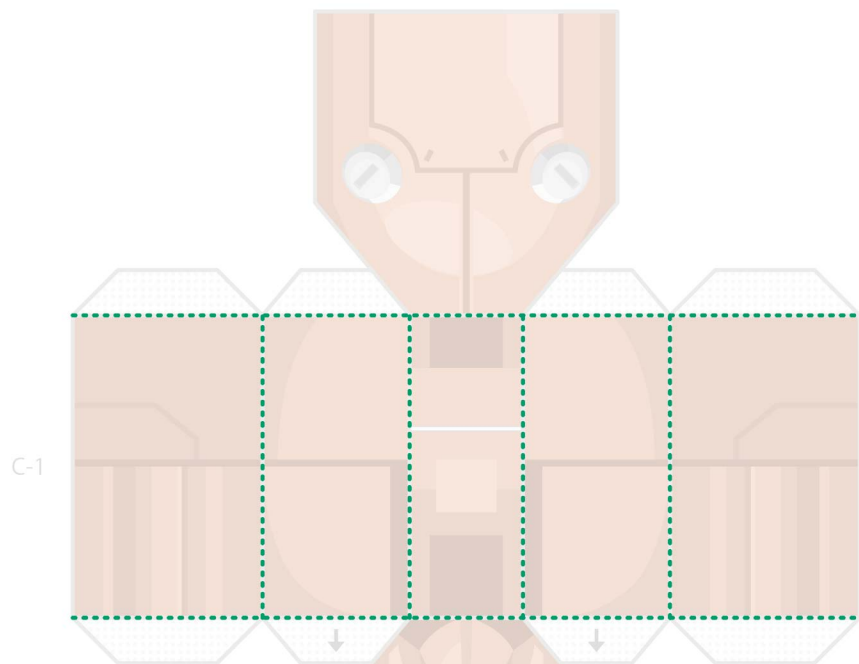
----- やまおり Mountain fold - - - - たにおり Valley fold



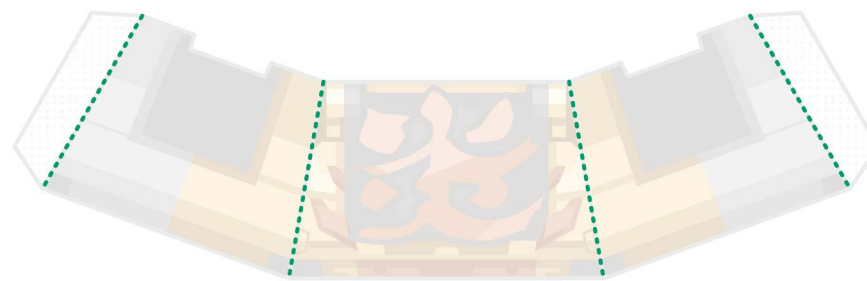
それぞれの点線を参考に折り目を付けてください。 Make a crease with reference to the dotted line

----- やまおり Mountain fold - - - - たにおり Valley fold

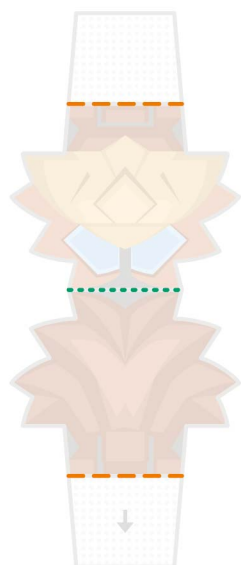
C



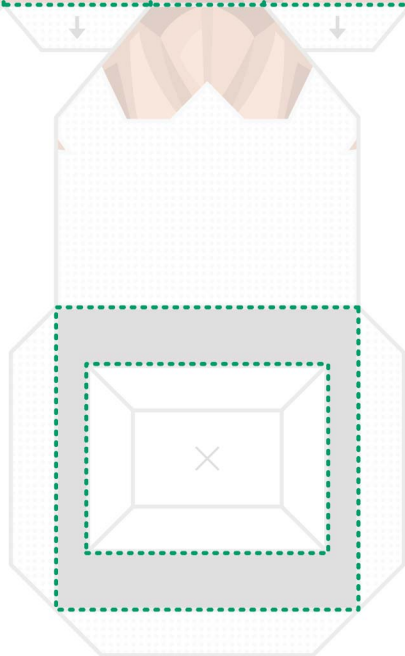
C-6



C-5



C-2



C-4



C-3